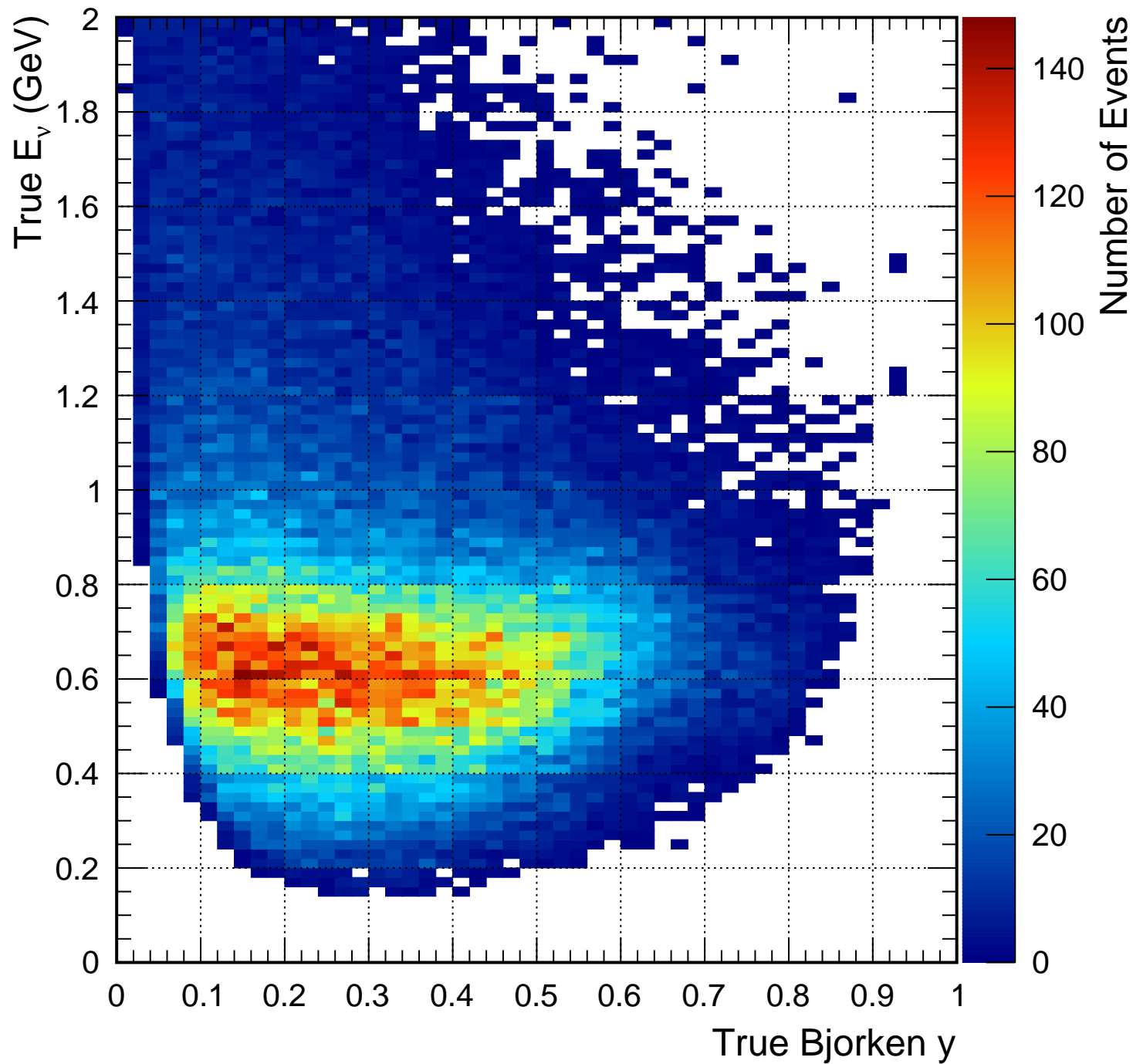
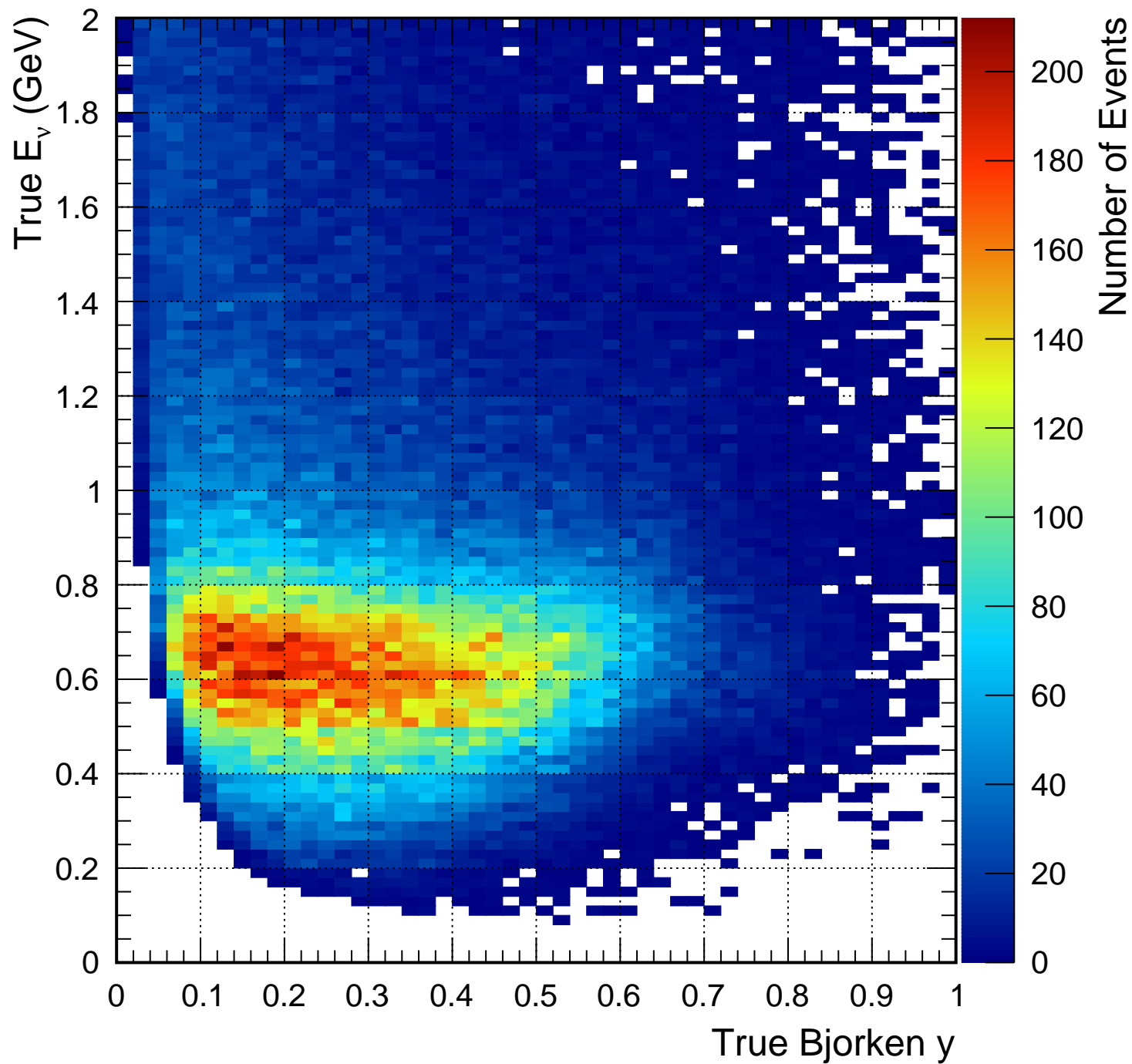


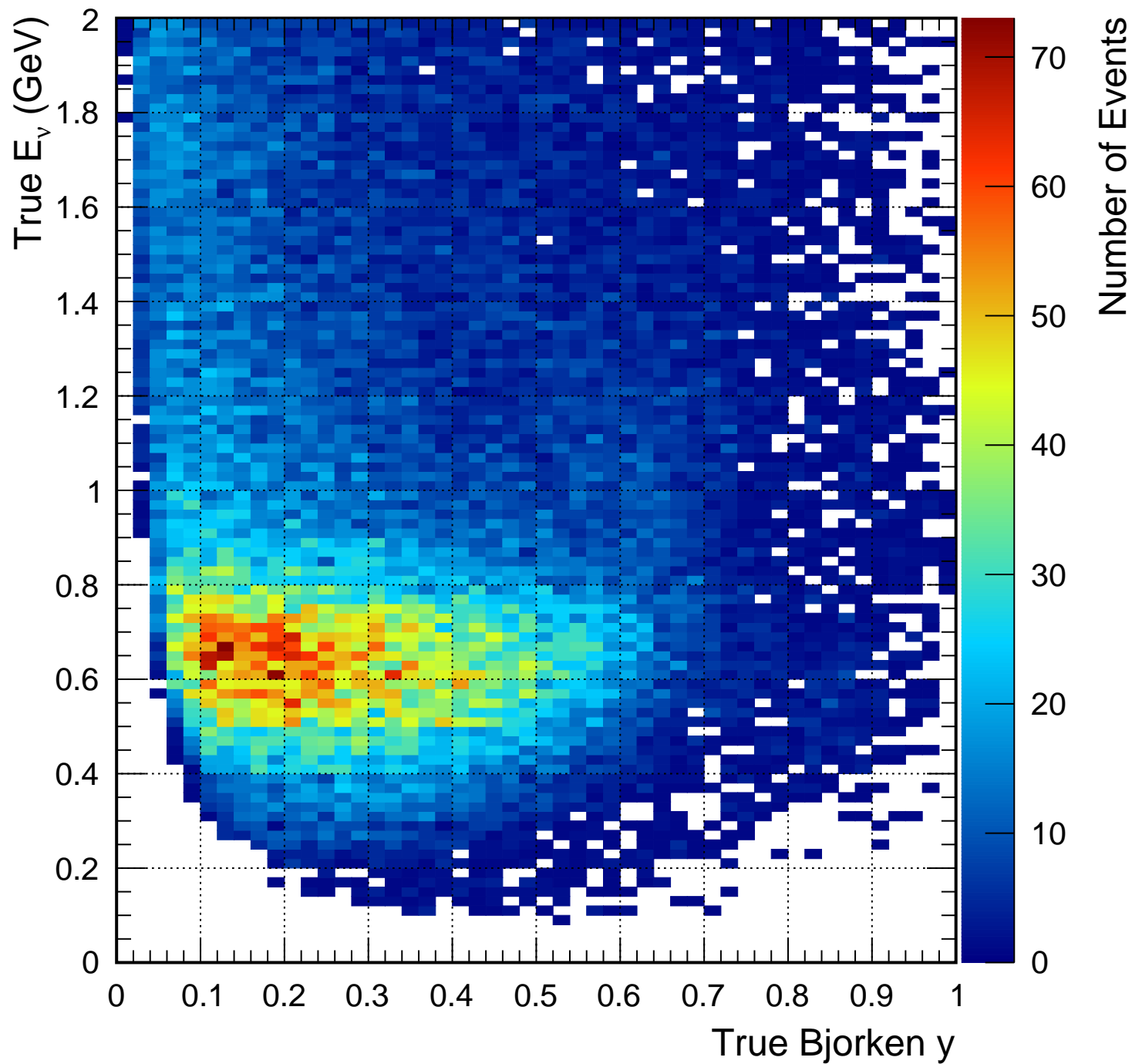
True CC0 π 1e && 1Re Selection



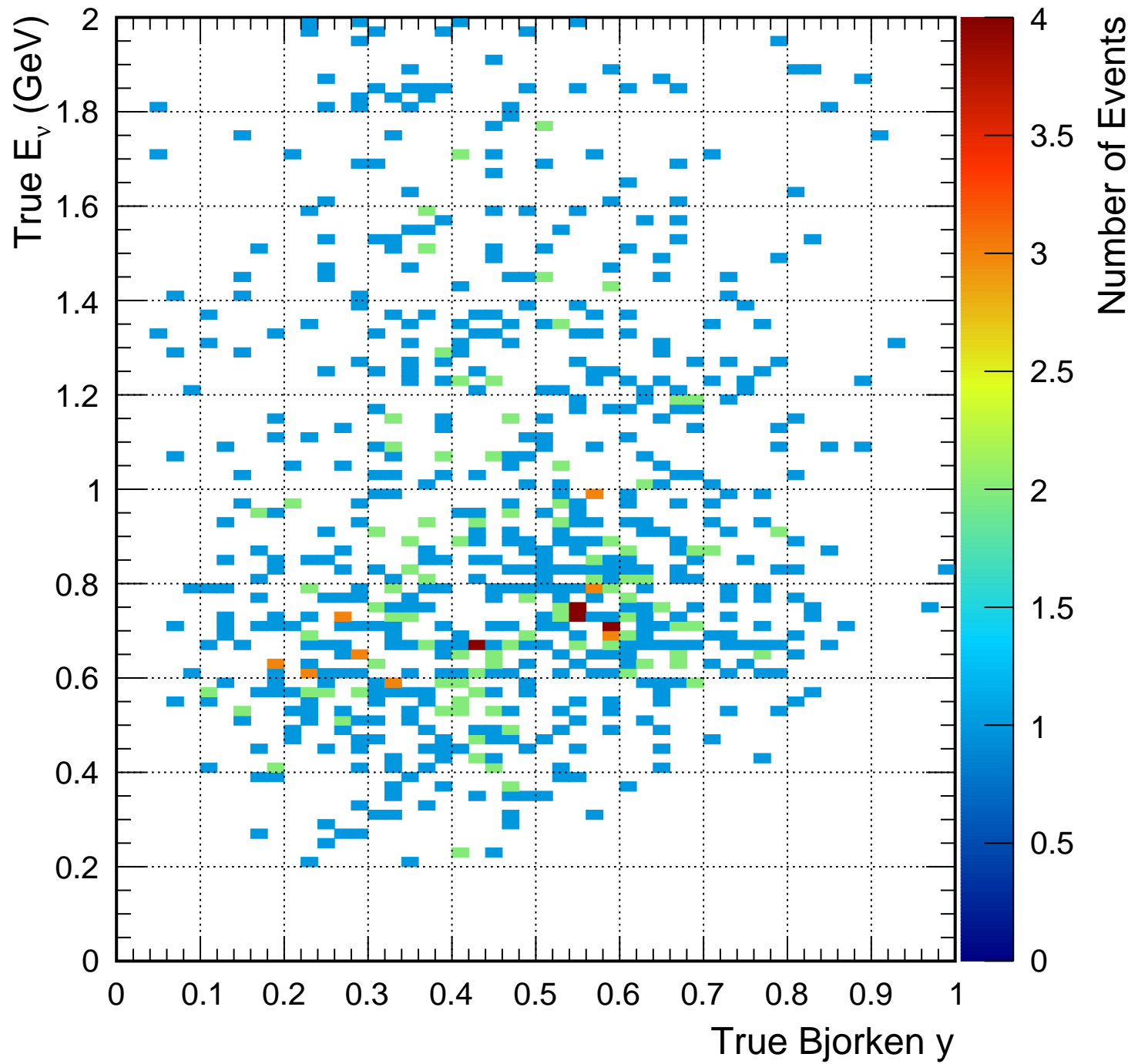
True CC0 π 1e



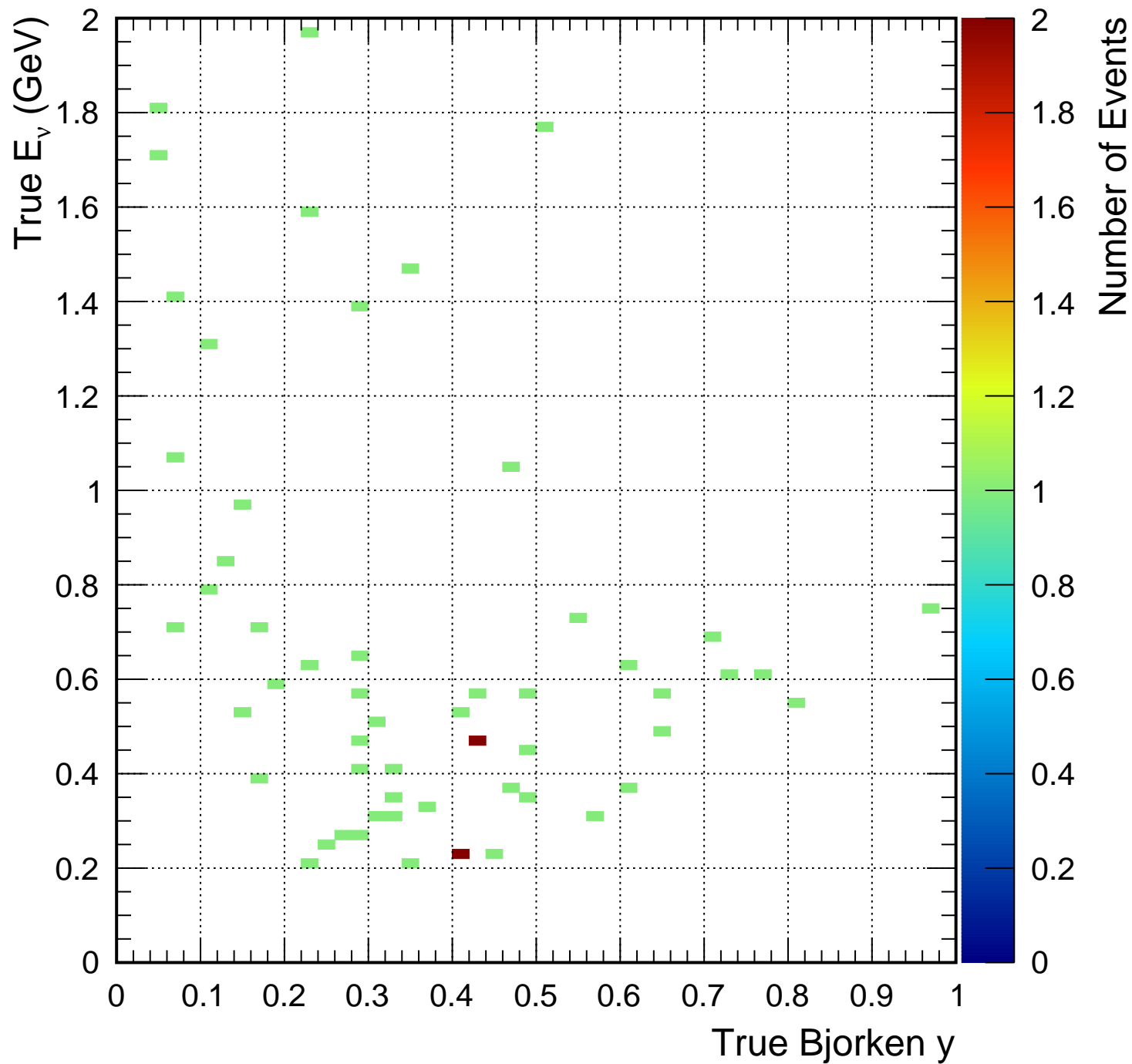
True CC0 π 1e && not selected



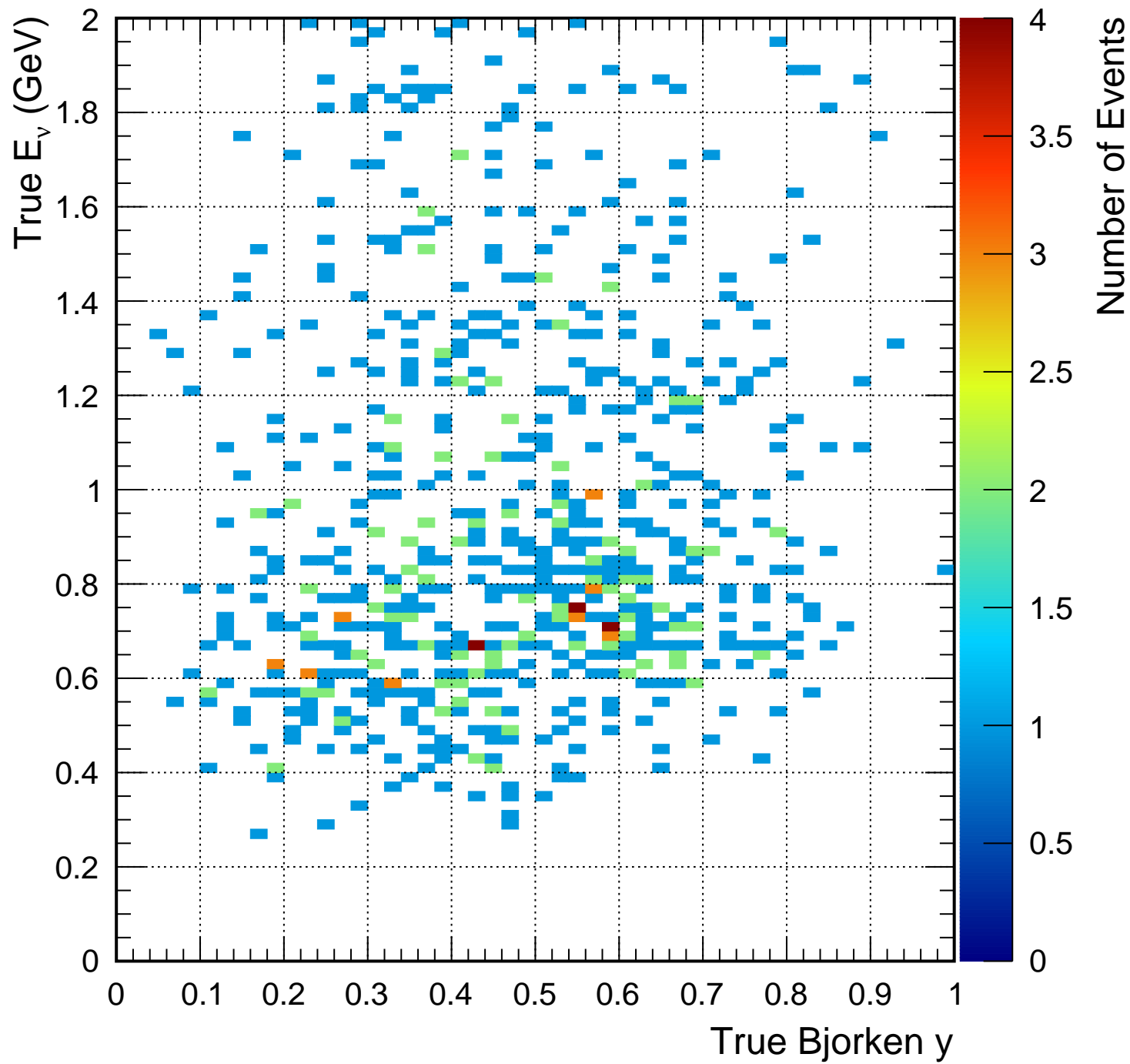
True CC0 π 1e & Selection not as 1Re



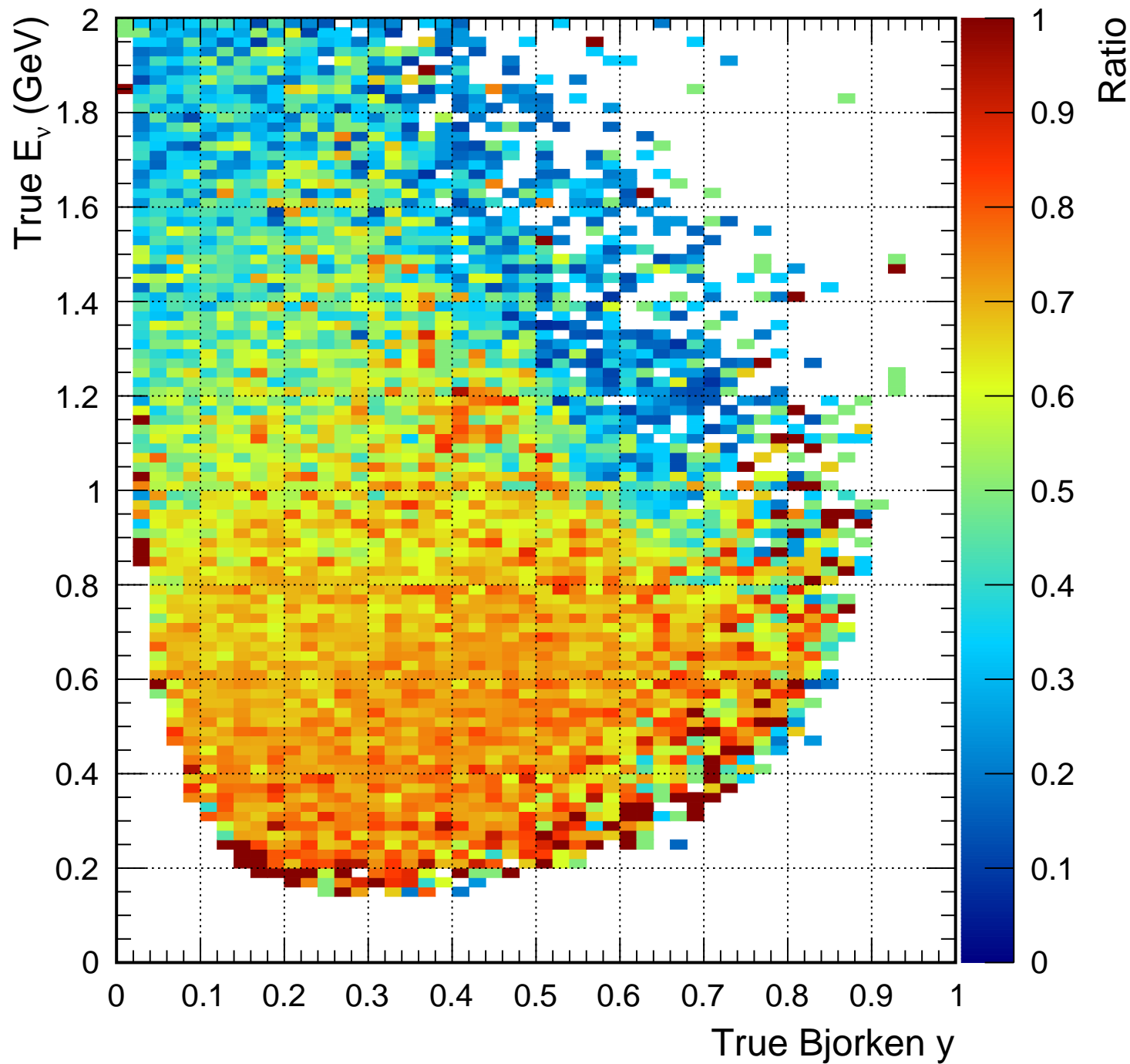
True CC0 π 1e & 1R μ Selection



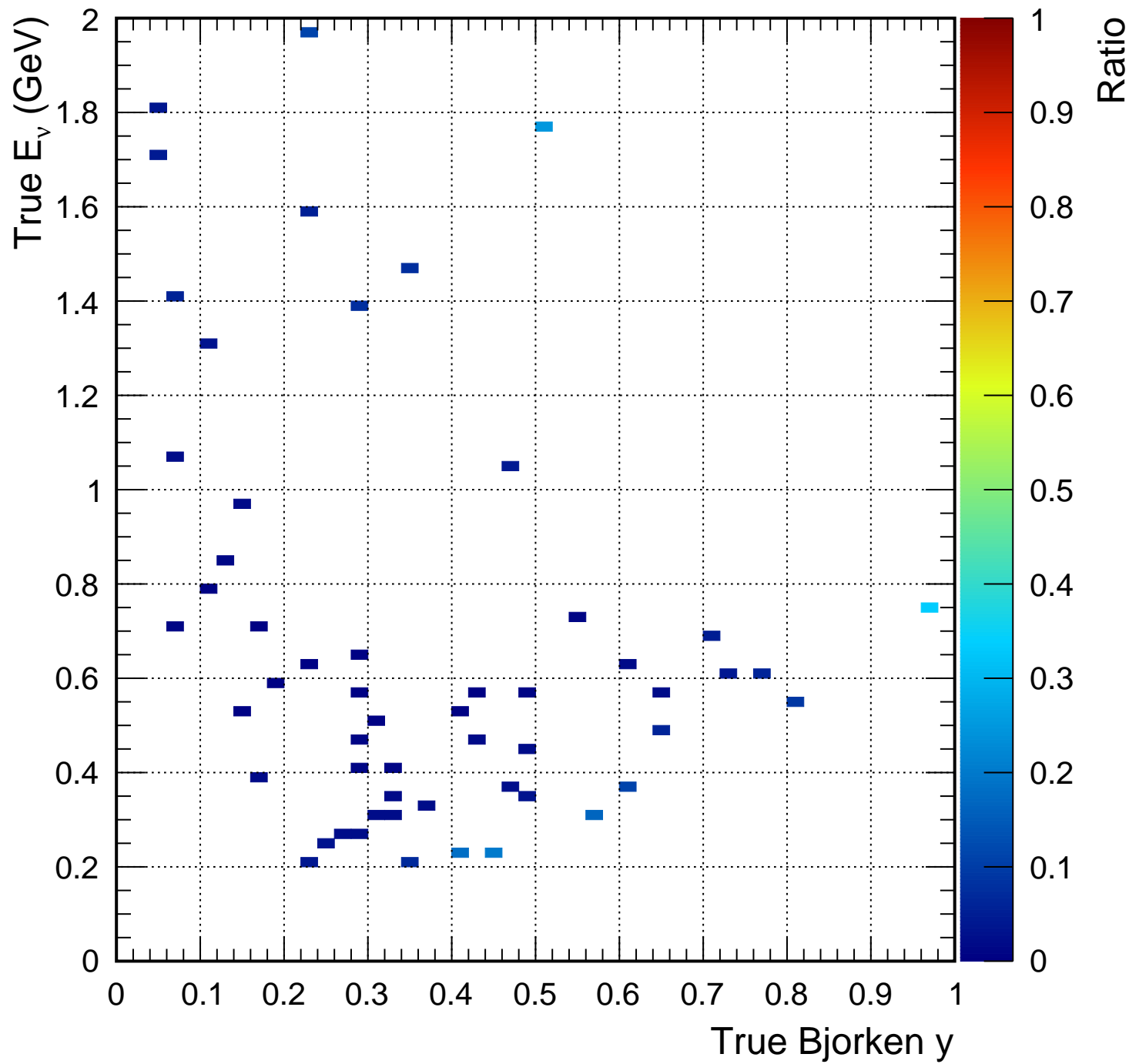
True $\text{CC}0\pi1e$ & $\nu_e\text{CC}1\pi^+$ Selection



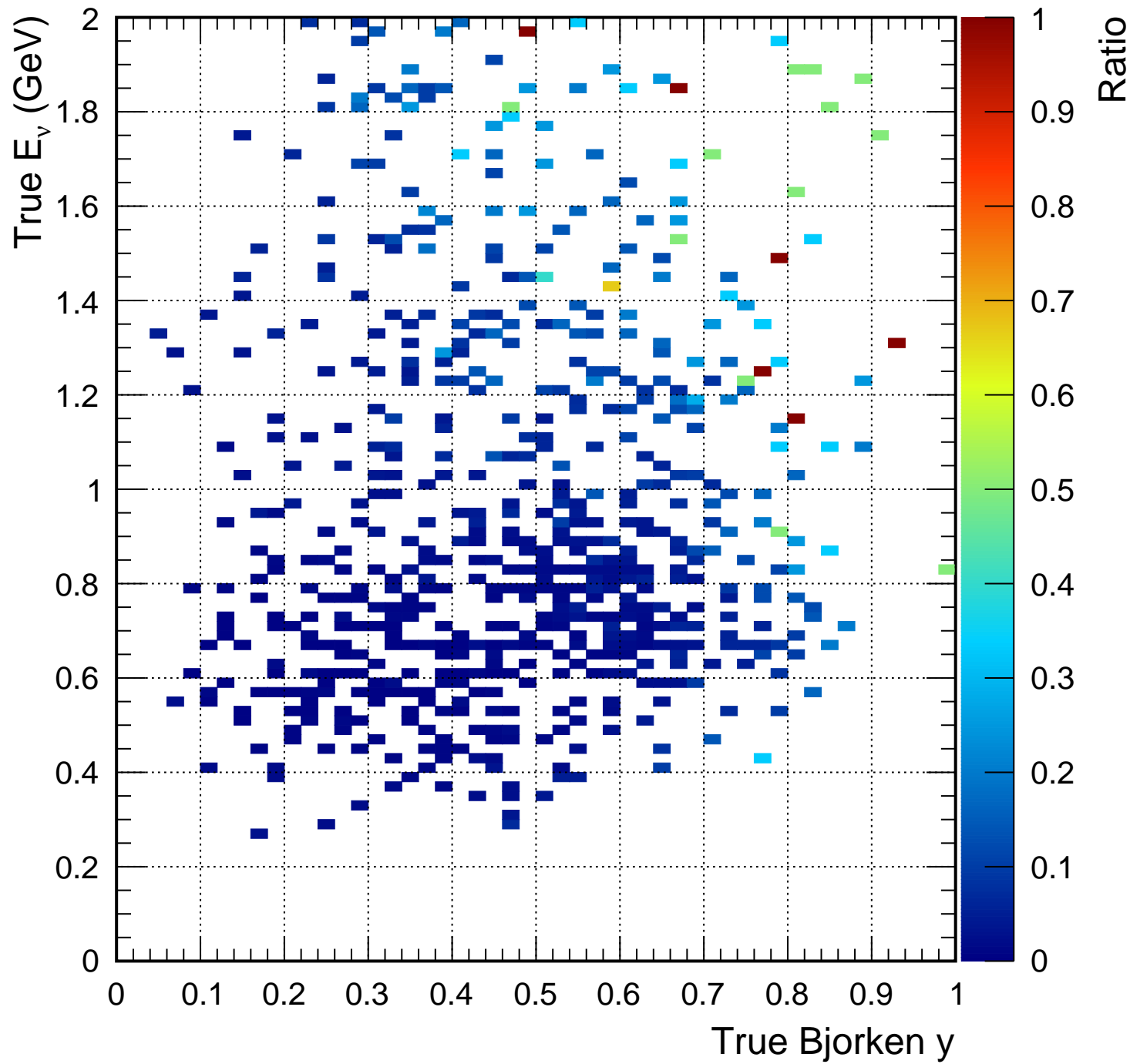
(True CC0 π 1e && 1Re Selection) / (True CC0 π 1e)



(True CC0 π 1e && 1R μ Selection) / (True CC0 π 1e)



(True CC0 π 1e & ν_e CC1 π^+ Selection) / (True CC0 π 1e)



(True CC0 π 1e && not selected) / (True CC0 π 1e)

