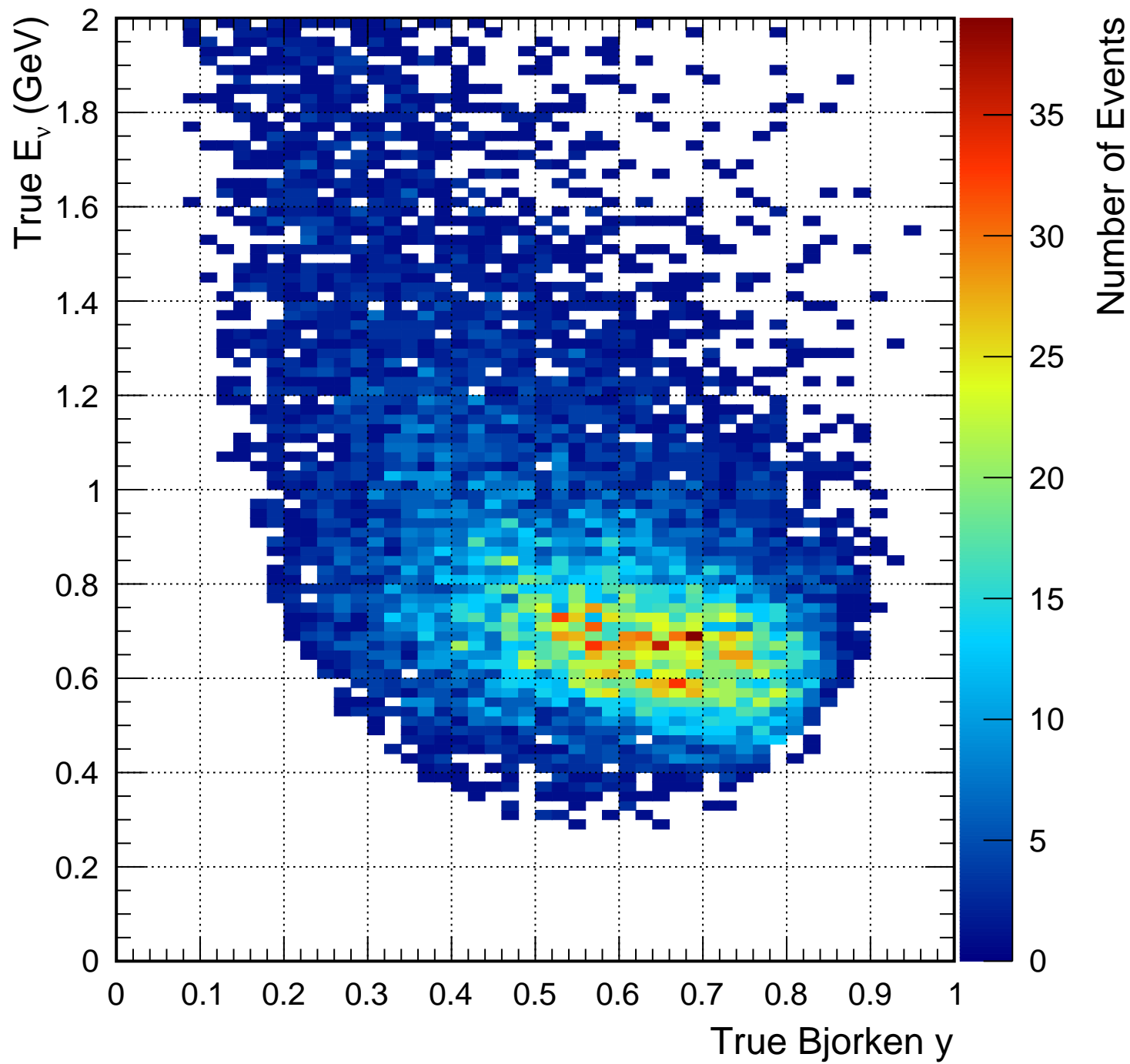
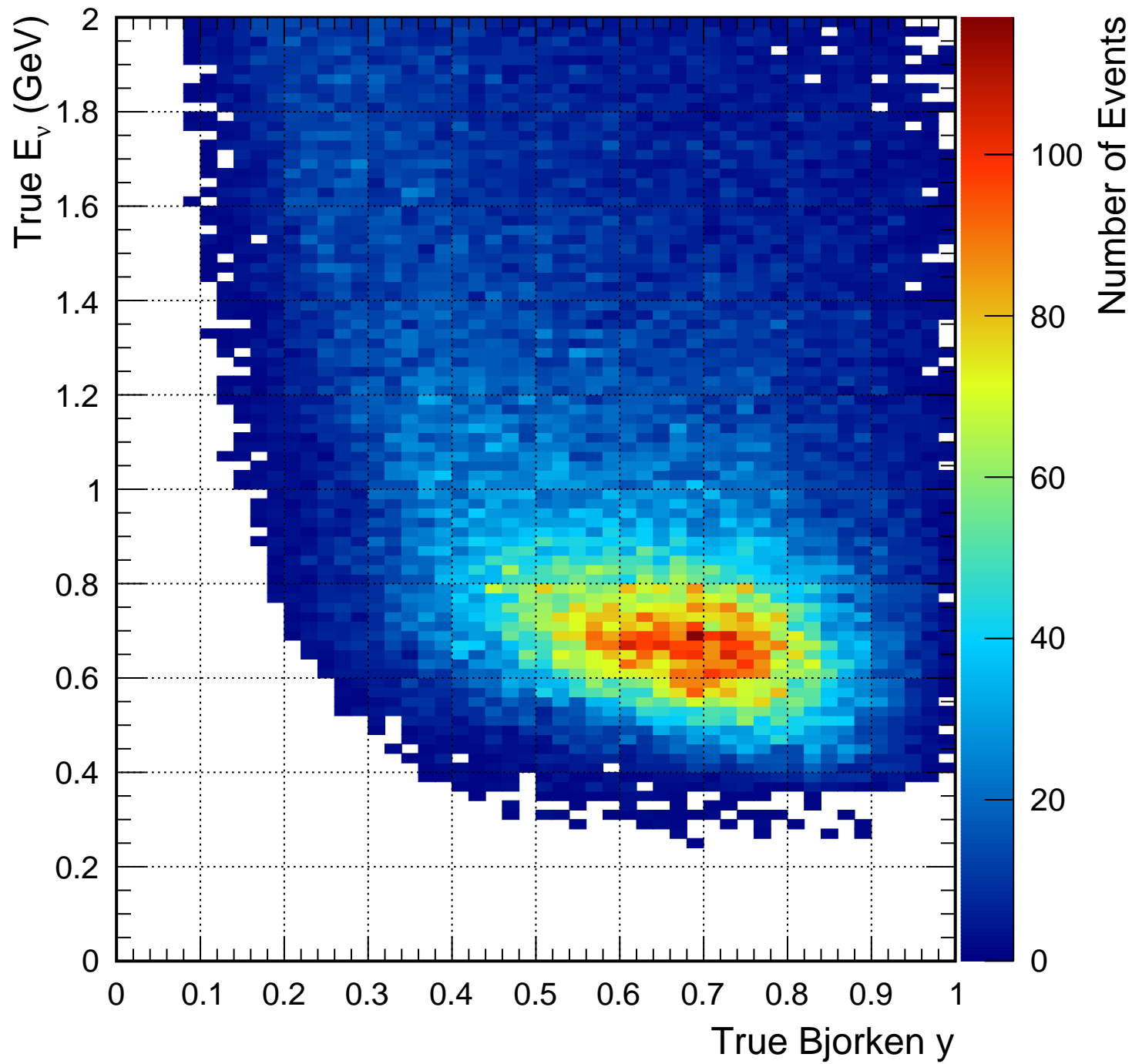


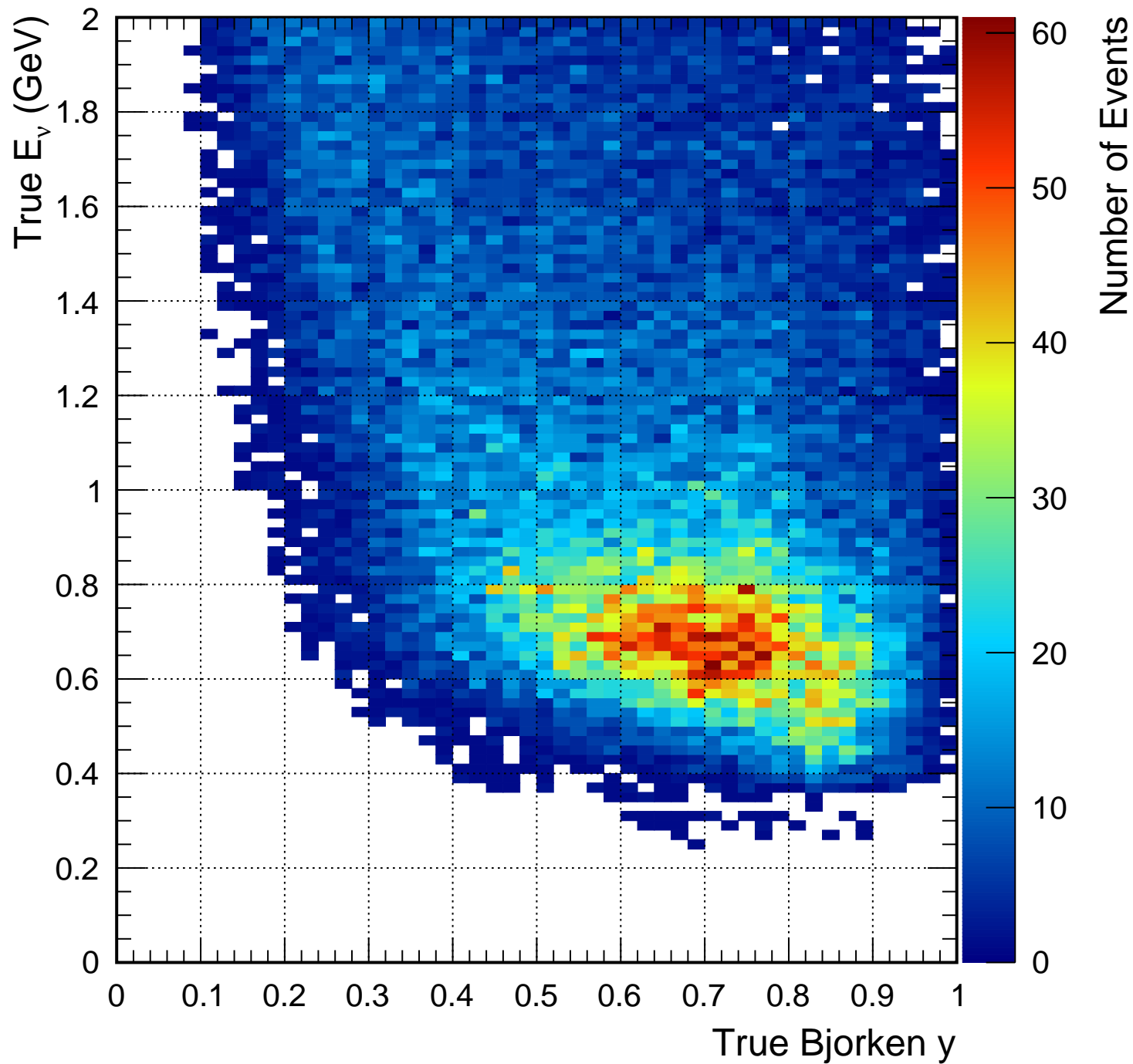
# True CC1 $\pi^+1e$ & $\nu_e$ CC1 $\pi$ Selection



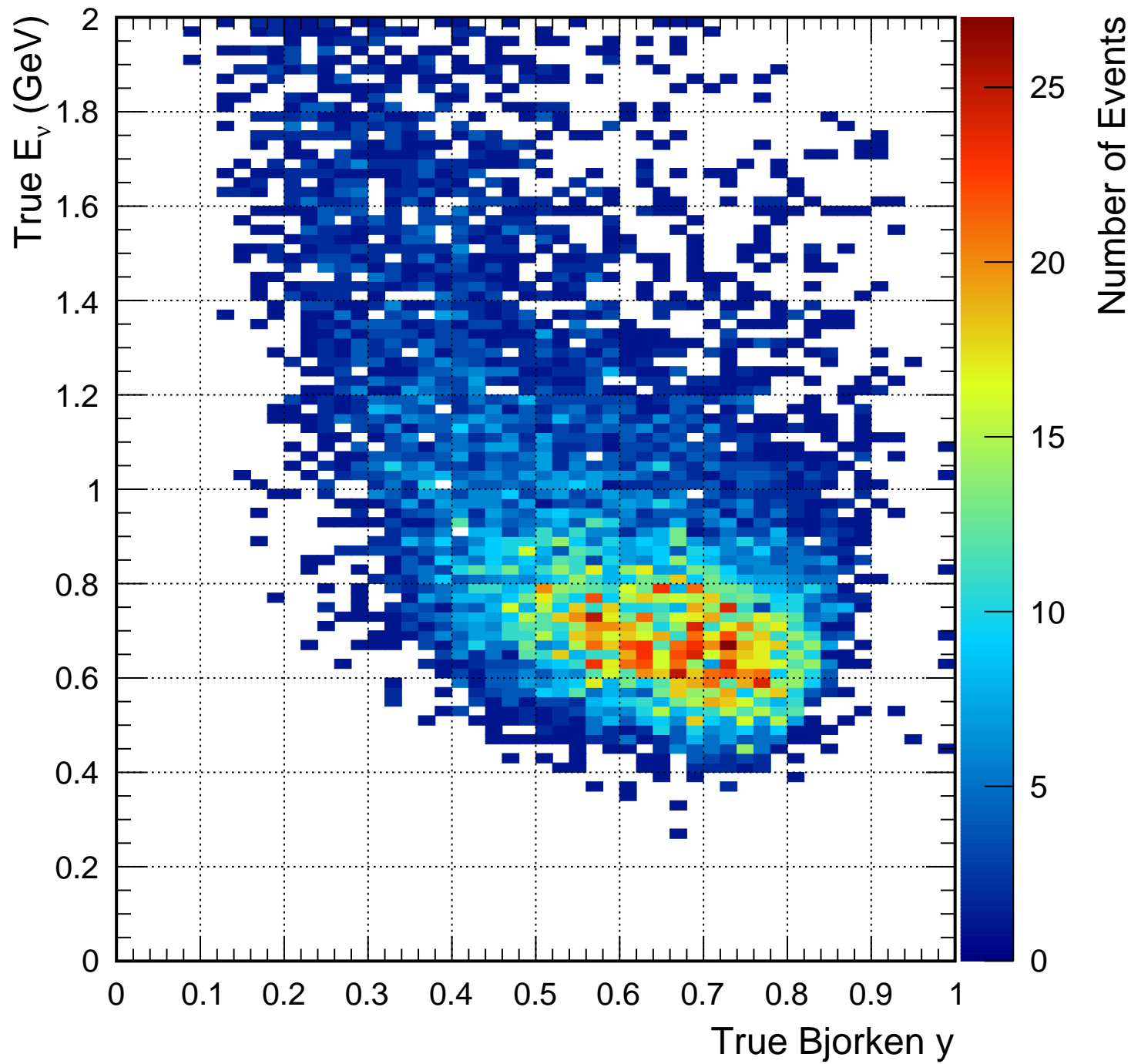
# True CC1 $\pi^+$ 1e



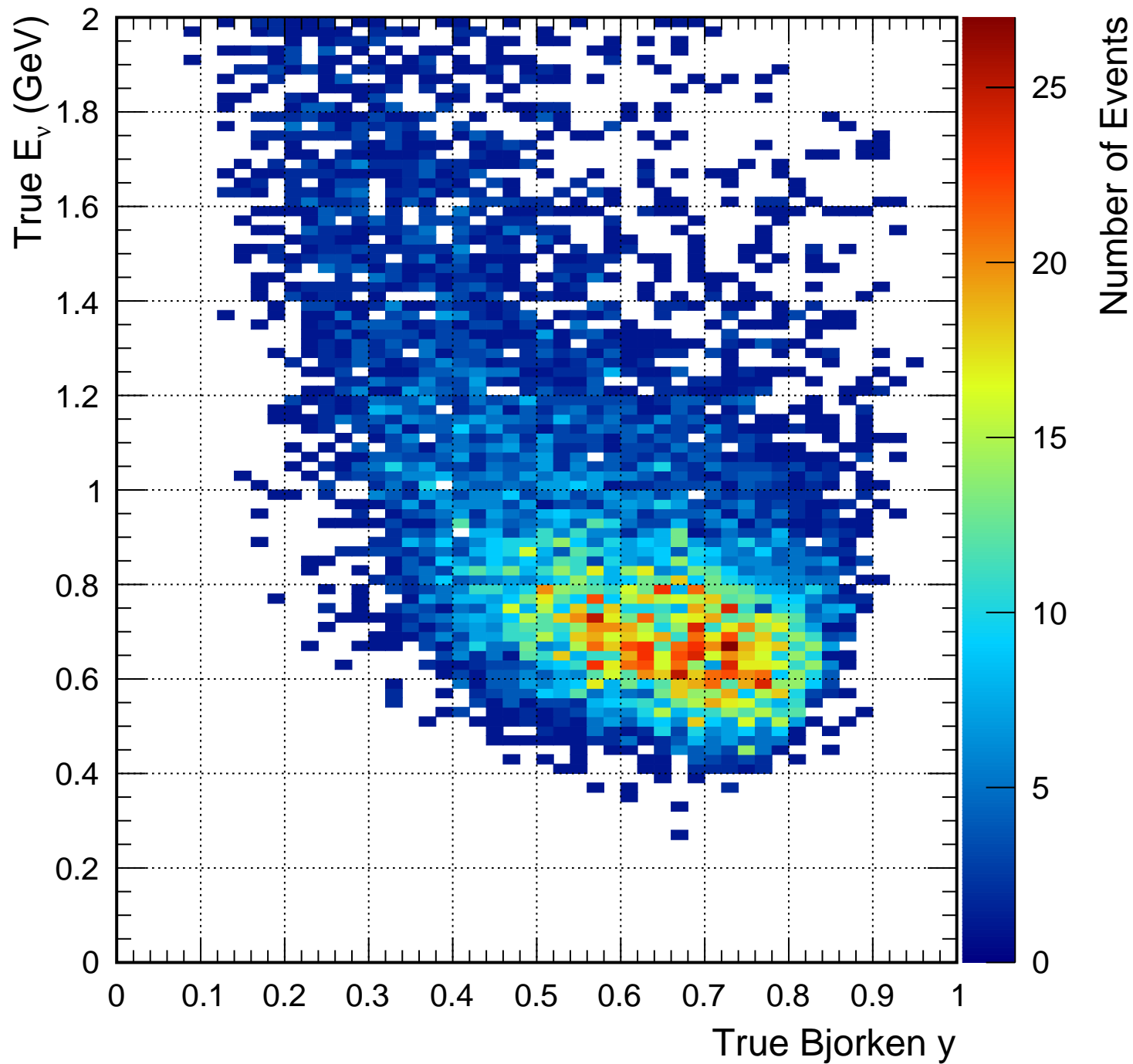
# True CC1 $\pi^+1e$ && not selected



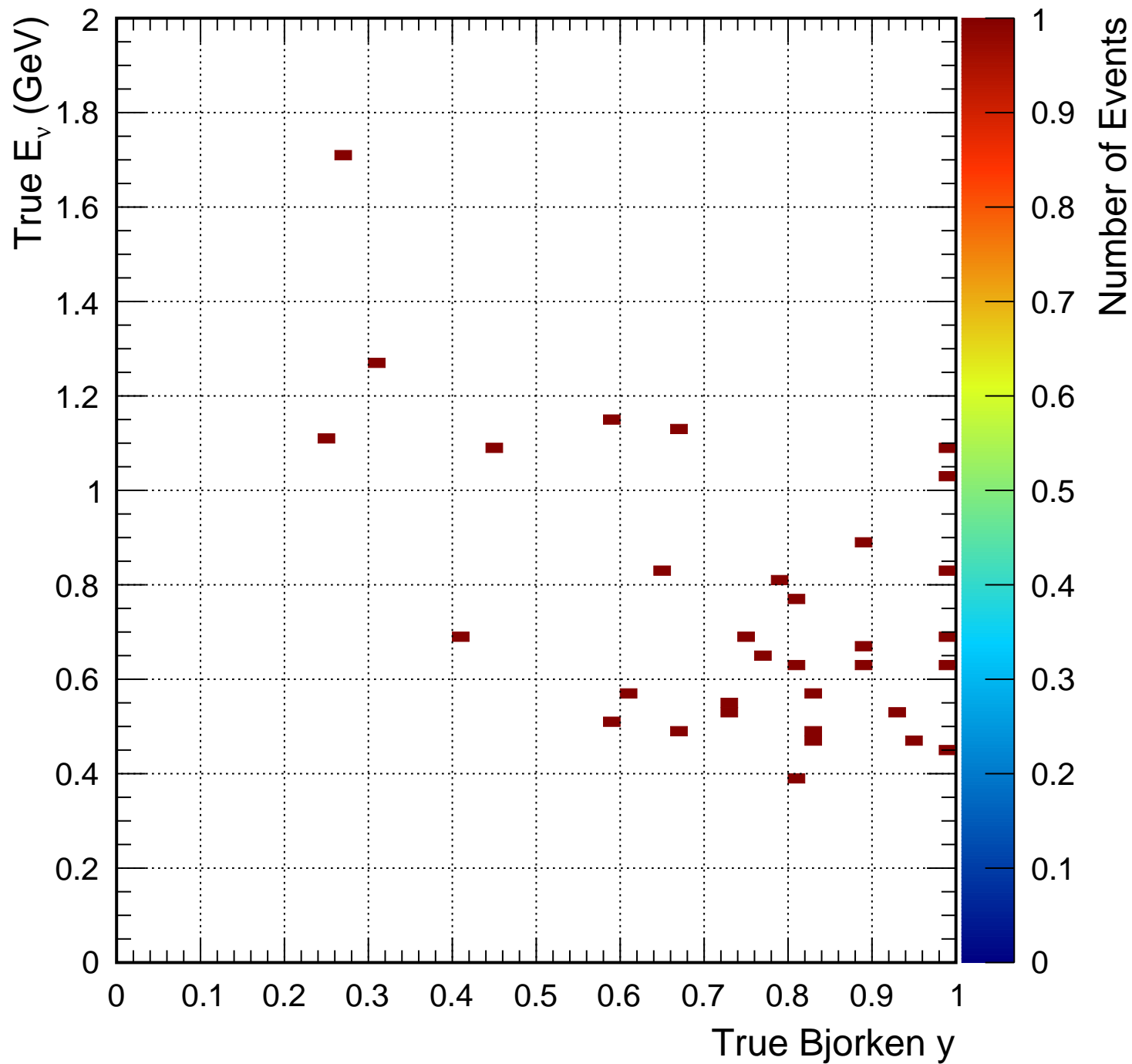
# True $\text{CC}1\pi^+1e$ && Selected not as $\nu_e\text{CC}1\pi$



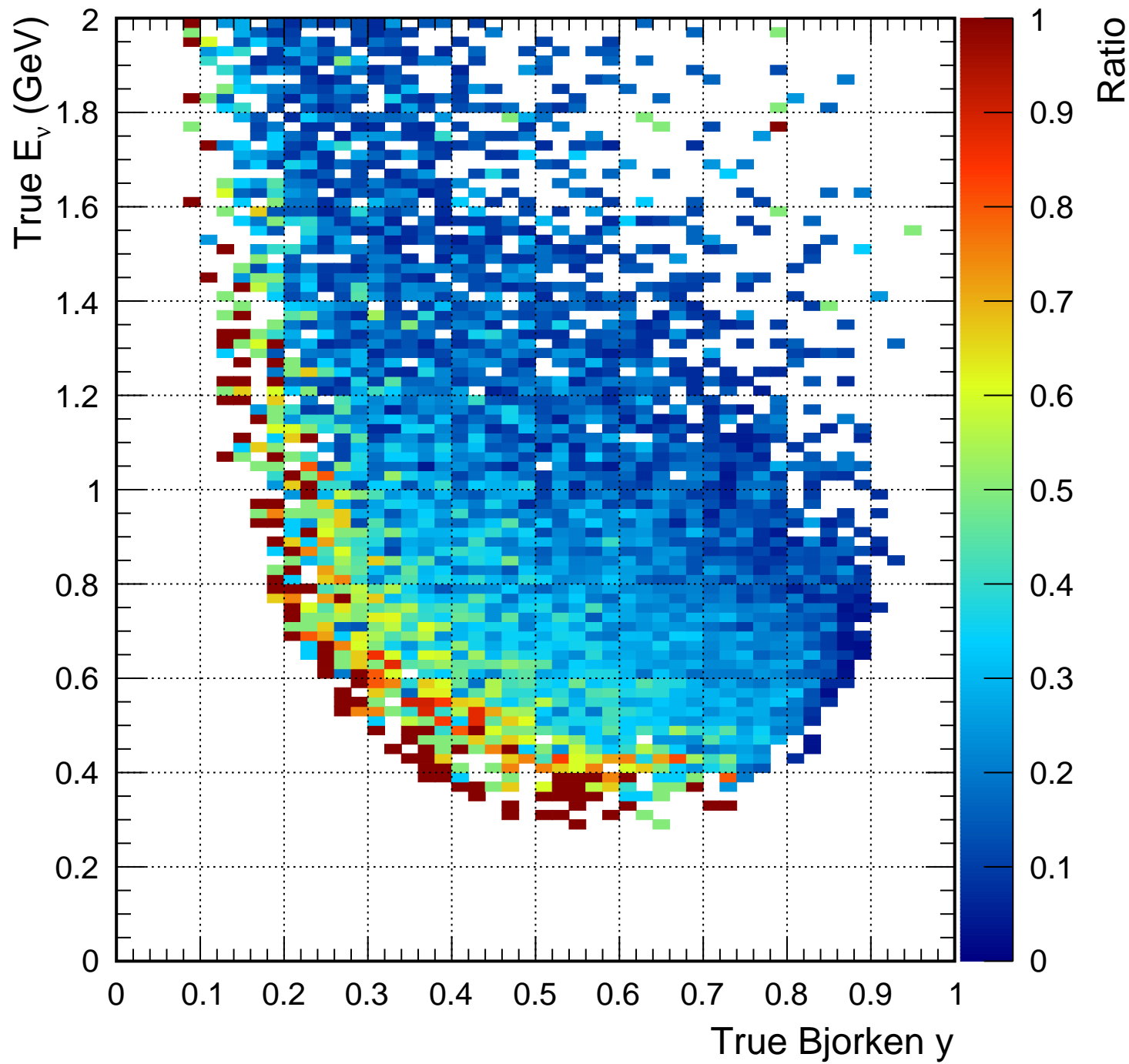
# True CC1 $\pi^+1e$ && 1Re Selection



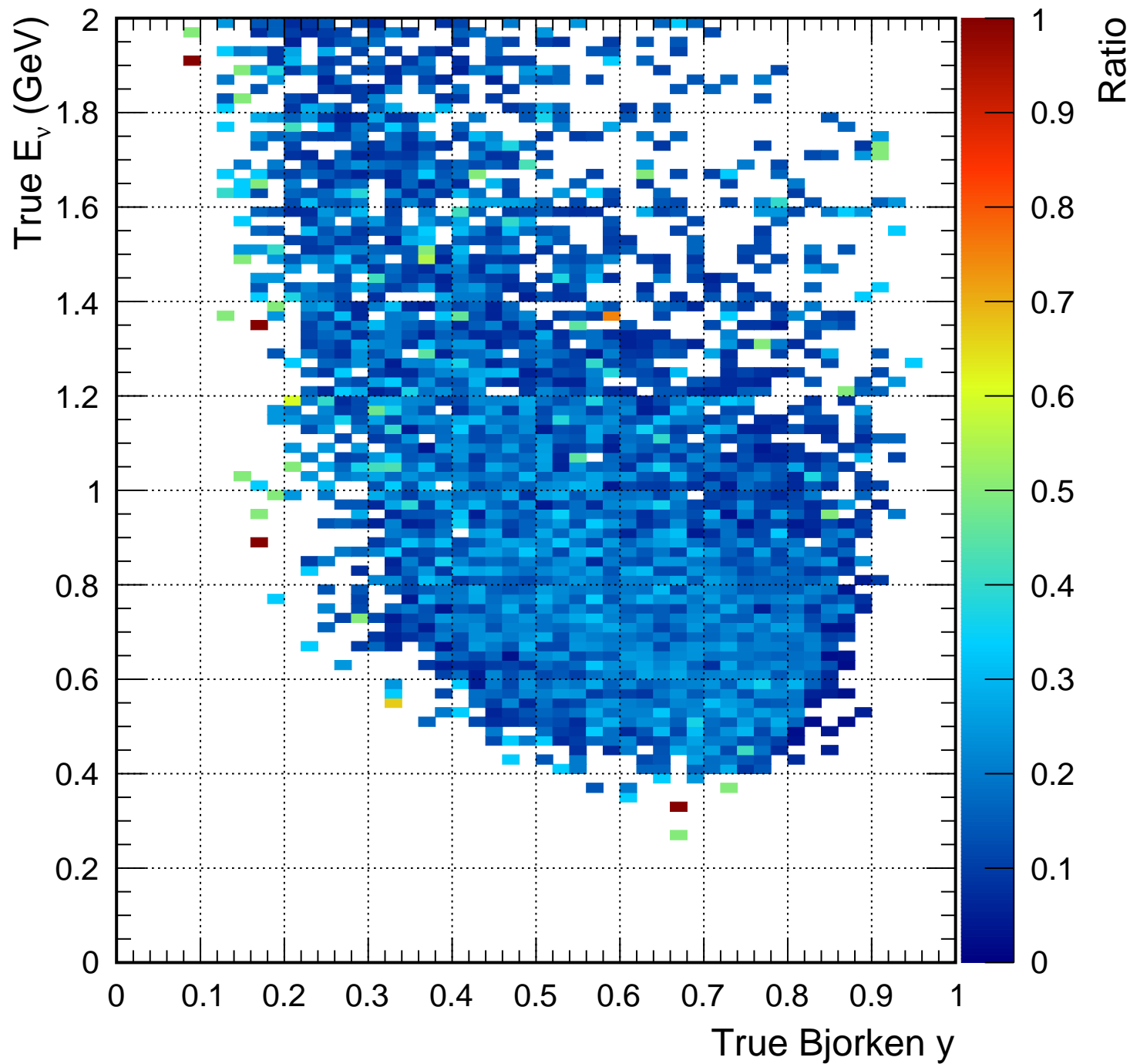
# True CC1 $\pi^+1e$ && 1R $\mu$ Selection



(True CC1 $\pi^+1e$  &&  $\nu_e$ CC1 $\pi$  Selection) / (True CC1 $\pi^+1e$ )

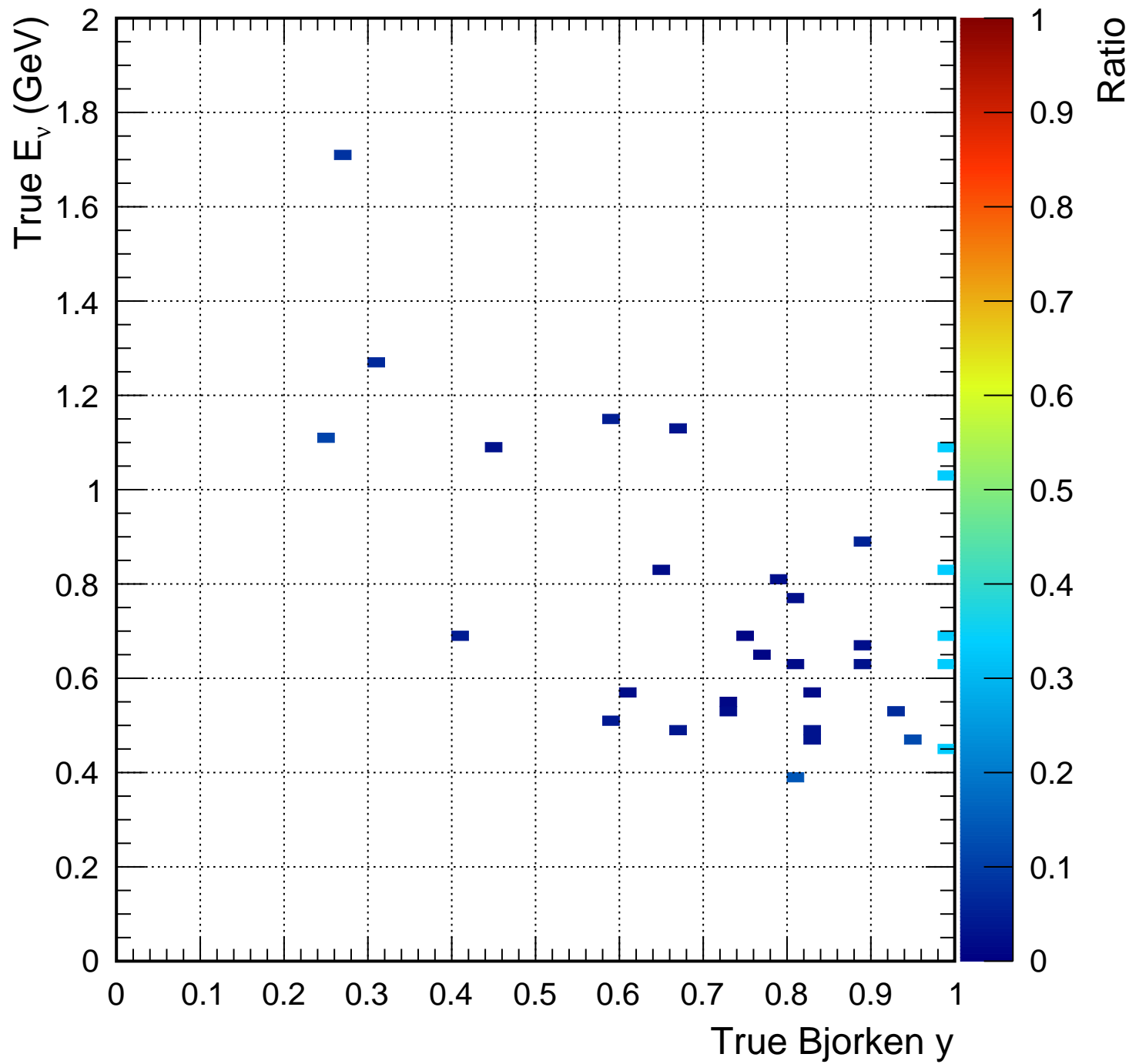


(True CC1 $\pi^+1e$  && 1Re Selection) / ( True CC1 $\pi^+1e$  )





(True CC1 $\pi^+1e$  && 1R $\mu$  Selection) / ( True CC1 $\pi^+1e$  )



(True CC1 $\pi^+1e$  && not selected) / ( True CC1 $\pi^+1e$  )

