

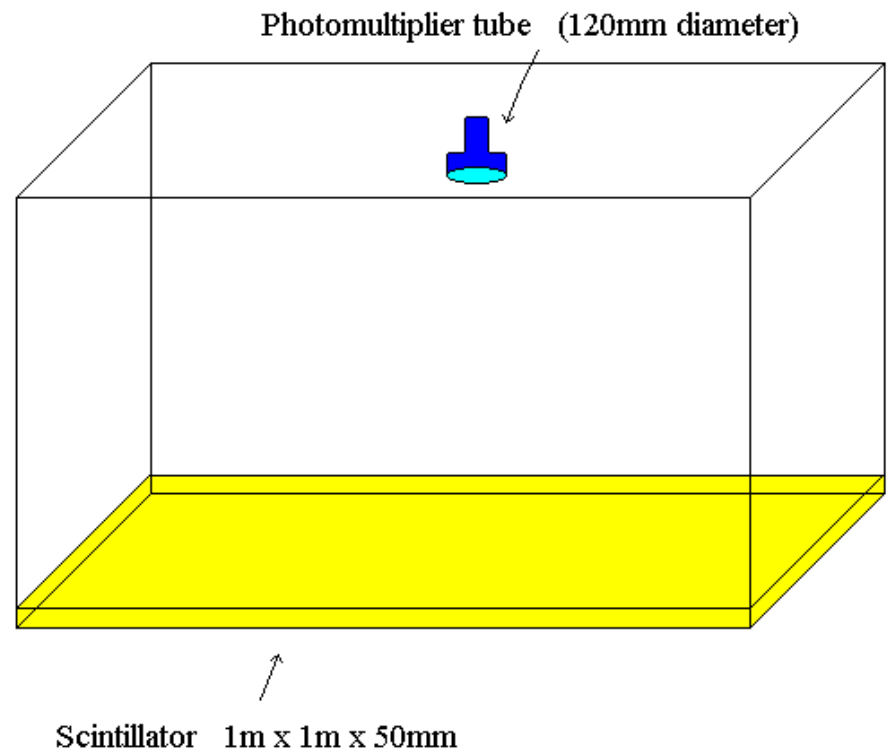


# Muon Daily Cycle

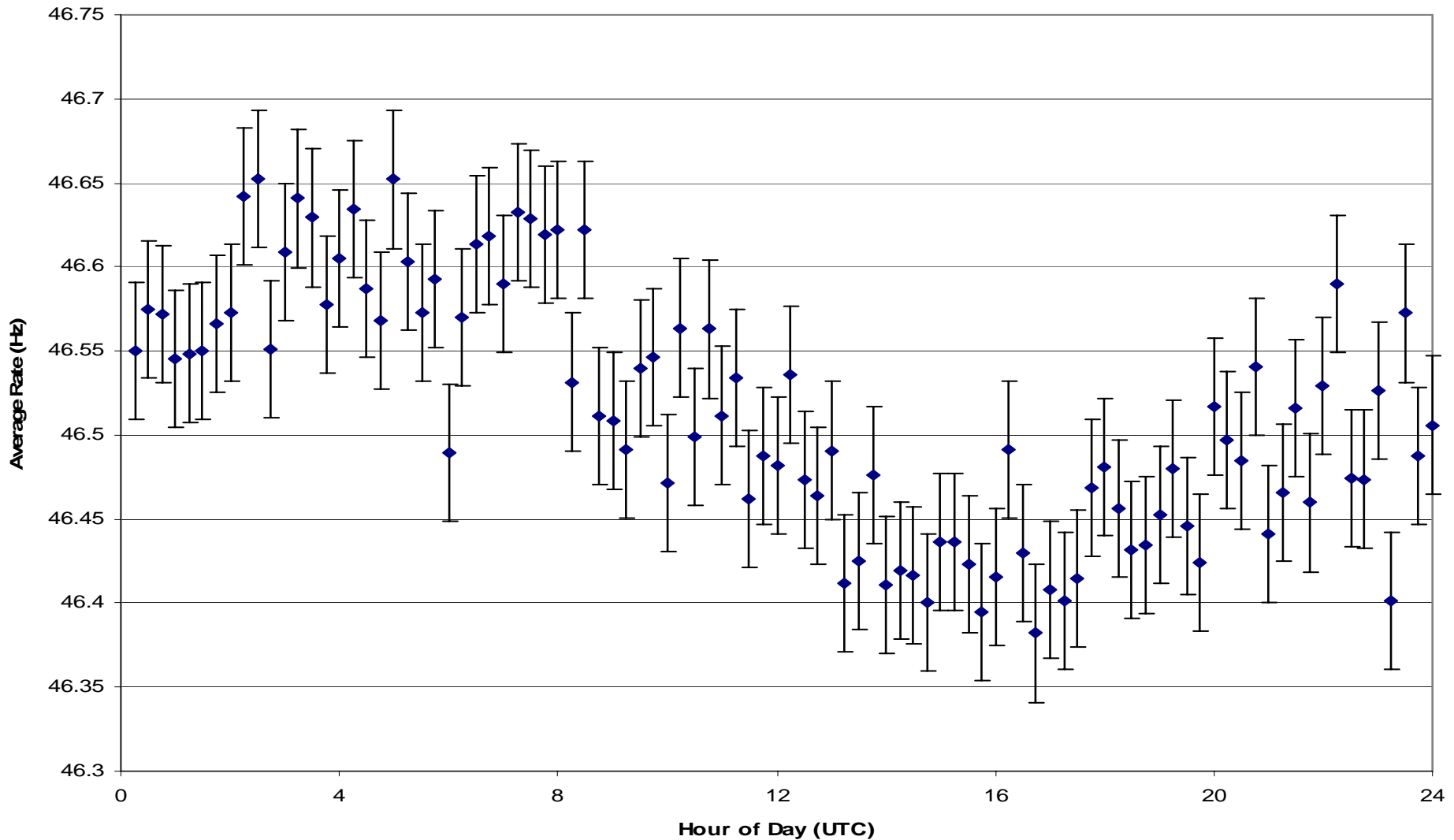
Mendon Muon Research '04 – '05

# Adelaide Detector Data

- University in Australia
- 1 sq meter detector
- 15 min interval



# Adelaide Daily Cycle: Aug '03



# Analysis

- Nine hour difference
- 0.2 Hz difference in highs and lows
- UTC time 5:00 is about 14:00 at Adelaide
- The small difference is perhaps caused by charged particles from the sun
- The Earth's magnetic field may bend the charged particles so that the greatest amount reaches Adelaide after 12:00 noon.

# U of R Daily Cycle: Nov '04

