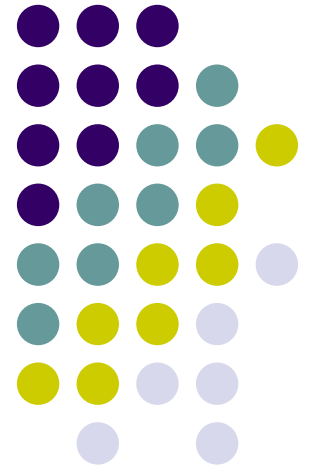


# Diamonds & t2k production

Howard Budd  
Oct 10 2007



# New diamond, Cutting edge



- This is the cutting edge of the new diamond



# Cutting edge relapped diamond



- Relapped diamond cutting edge

# Diamond before relap

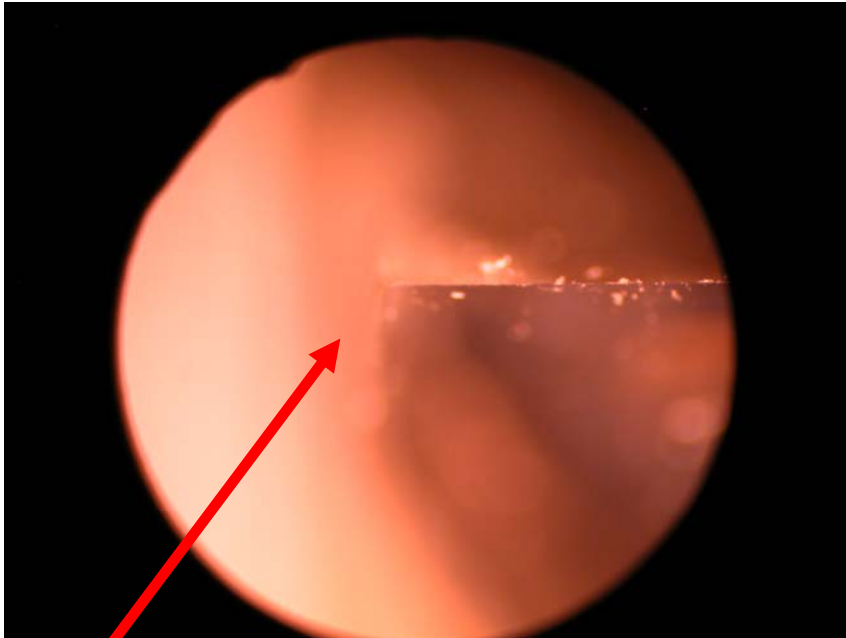


- Dia  
befor  
relap





# Difference New & Relapped Diamond



Surface perpendicular to the Cutting surface. For the new diamond we see its not perpendicular to the cutting Surface. Its blurred here

- The following is a little hard to see with our microscope but can be seen with the 20 power magnifying glass
- For the relapped diamond this surface perpendicular to the surface is really perpendicular, but for the new diamond it is at an angle. The picture shows the angle, but not very well.
- I don't know what this means



## T2k pigtail production

- We want to produce a small sample to test our production technique, say 10
- In discussing this with Dan and Janina, Janina suggested a fixture to get the fibers glued in the ferrules with a consistent length sticking out the bottom of the ferrule. She and Dan drew it up
  - It looks fairly simple, so I thought we would discuss it with Bob Flight when he comes out.
  - It looks like it shouldn't take much of his time.
- This still assumes we have to cut the fibers with the correct length

# T2K production



- I talked with Dave Warner and he asked for a schedule
  - I said we ship 10 of each type out the end of next week and ship the rest the week before Thanksgiving
- This is probably too soon to develop fixturing for, so that we try to do this without fixturing, especially the 1<sup>st</sup> 10
- If these 1<sup>st</sup> 10 turn out OK, we try to do the rest with the same technique
- With the mapper coming up, I'm having Janina work on this
- If we can get this fixturing in time, we will use the fixturing
- In any case we would like to try the fixturing during this period of time



# Ferrules for this Production

- The cut back ferrules arrived
- There is some flashing on the nipple which has been cut back
- This might be a problem, so I think the first thing to do is have some short fibers glued in the ferrules to see if there is any gluing problem, i.e. backflow
  - In addition it should give a clue into what we might need to do to remove the flashing