

# DIGIT survey of far-infrared lines from protoplanetary discs: II. CO

★

Gwendolyn Meeus<sup>1</sup>, Colette Salyk<sup>2</sup>, Simon Bruderer<sup>3,4</sup>, Davide Fedele<sup>3</sup>, Koen Maaskant<sup>4</sup>, Neal J. Evans II<sup>5</sup>, Ewine F. van Dishoeck<sup>3,4</sup>, Benjamin Montesinos<sup>6</sup>, Greg Herczeg<sup>7</sup>, Jeroen Bouwman<sup>8</sup>, Joel D. Green<sup>5</sup>, Carsten Dominik<sup>9</sup>, Thomas Henning<sup>8</sup>, Silvia Vicente<sup>10</sup>, and the DIGIT team

<sup>1</sup> Universidad Autonoma de Madrid, Dpt. Fisica Teorica, Campus Cantoblanco, Spain e-mail: gwendolyn.meeus@uam.es

<sup>2</sup> National Optical Astronomy Observatory, 950 N. Cherry Avenue, Tucson, AZ 85719, USA

<sup>3</sup> Max Planck Institute für Extraterrestrische Physik, Giessenbachstrasse 1, 85748 Garching, Germany

<sup>4</sup> Leiden Observatory, Leiden University, P.O. Box 9513, 2300 RA Leiden, The Netherlands

<sup>5</sup> The University of Texas at Austin, Department of Astronomy, 2515 Speedway, Stop C1400, Austin, TX 78712-1205, USA

<sup>6</sup> Dept. of Astrophysics, CAB (CSIC-INTA), ESAC Campus, P.O. Box 78, 28691 Villanueva de la Cañada, Spain

<sup>7</sup> Kavli Institute for Astronomy and Astrophysics, Yi He Yuan Lu 5, Beijing, 100871, P.R. China,

<sup>8</sup> Max Planck Institute for Astronomy, Königstuhl 17, 69117, Heidelberg, Germany

<sup>9</sup> Anton Pannekoek, Amsterdam

<sup>10</sup> Kapteyn Astronomical Institute, Postbus 800, 9700 AV Groningen, The Netherlands

Received ; accepted

## ABSTRACT

CO is an important component of a protoplanetary disc as it is one of the most abundant gas phase species. Furthermore, observations of the CO transitions can be used as a diagnostic of the gas, tracing conditions in both the inner and outer disc. We present *Herschel*/PACS spectroscopy of a sample of 22 Herbig Ae/Be (HAEBEs) and 8 T Tauri stars (TTS), covering the pure rotational CO transitions from  $J = 14 \rightarrow 13$  up to  $J = 49 \rightarrow 48$ . CO is detected in only 5 HAEBEs, AB Aur, HD 36112, HD 97048, HD 100546 and IRS 48, and in 4 TTS, AS 205, S CrA, RU Lup, and DG Tau. The highest transition seen is  $J = 36 \rightarrow 35$ , with  $E_{\text{up}}$  of 3669 K, detected in HD 100546 and DG Tau. We construct rotational diagrams for the discs with at least 3 CO detections to derive  $T_{\text{rot}}$ , and find average temperatures of 270 K for the HAEBEs and 485 K for the TTS. HD 100546 requires an extra temperature component with  $T_{\text{rot}} \sim 900\text{-}1000$  K, suggesting a range of temperatures in its disc atmosphere, consistent with thermo-chemical disc models. In HAEBEs, the objects with CO detections all have flared discs in which the gas and dust are thermally decoupled. We use a small model grid to analyse our observations and find that an increased amount of flaring means higher line flux, as it increases the mass in warm gas. CO is not detected in our flat discs as the emission is below the detection limit. We find that HAEBE sources with CO detections have high  $L_{\text{UV}}$  and strong PAH emission, again connected to the heating of the gas. In TTS, the objects with CO detections are all sources with evidence for a disc wind or outflow. For both groups of objects, sources with CO detections generally have high UV luminosity (either stellar in HAEBEs or due to accretion in TTS), but this is not a sufficient condition for the detection of the far-IR CO lines.

**Key words.** Stars – infrared, Astrochemistry, Line: identification, Protoplanetary discs

## 1. Introduction

It is firmly established that circumstellar discs around young stars are sites of planet formation. During the first 10 Myr, the initially gas-rich disc will first evolve into a transitional and finally into a debris disc, while dispersing its gas content. The knowledge of this dispersal process and what favours/hinders it is a crucial part of the planet-formation puzzle, as the amount of gas present in a disc determines whether gas-rich planets can form. Therefore, three aspects need to be characterised well: the disc geometry, the solid state content, and the gas content. Both the geometry and the dust in HAEBE discs are well-studied (e.g. the review by Williams & Cieza 2011; Meeus et al. 2001, Dominik et al. 2003 and Benisty et al. 2010 for the geome-

try; Acke et al. 2010 for the Polycyclic Aromatic Hydrocarbon (PAH) and Juhász et al. (2010) for the dust properties).

To understand the gas component — spatial distribution, chemistry and physical properties — it is necessary to observe a range of transitions in several species, as they can originate in different regions of the disc under distinct conditions (density, temperature, radiation field). For the purpose of studying the gas disc, H<sub>2</sub> and CO lines are most often used, since they are the most abundant molecules present. In the FUV, H<sub>2</sub> probes the warm gas and is frequently detected in TTS (e.g., Herczeg et al. 2006; Ingleby et al. 2011; France et al. 2012). In the IR, the detection of H<sub>2</sub> is more difficult, due to the nature of the H<sub>2</sub> molecule (homonuclear with wide spacing of energy levels). In a survey of 15 HAEBEs with CRIRES, Carmona et al. (2011) detected ro-vibrational transitions at 2.1218  $\mu\text{m}$  in only two objects. Earlier, Bitner et al. (2008), Carmona et al. (2008), Martin-Zaïdi et al. (2009, 2010) searched for pure rotational lines of H<sub>2</sub> at 17.035  $\mu\text{m}$  in a sample of 20 HAEBEs; only two detections were reported. In TTS, the success rate is a little higher: Lahuis

Send offprint requests to: Gwendolyn Meeus,  
e-mail: gwendolyn.meeus@uam.es

\* *Herschel* is an ESA space observatory with science instruments provided by European-led Principal Investigator consortia and with important participation from NASA.

et al. (2007) detected mid-IR  $H_2$  emission lines in six TTS, while Bary et al. (2008) found five more  $H_2$  detections in the near-IR.

In sharp contrast, the detection of CO, although less abundant, is much easier. Its lines have been used to trace both the inner and outer disc. The fundamental ro-vibrational CO band ( $\Delta v = 1$ ) at  $4.7 \mu\text{m}$  traces warm ( $T > 100 \text{ K}$ ) gas in the terrestrial planet-forming region (0.1 – 10 AU). This band is often observed in HAEBEs (e.g. Blake & Boogert 2004; Brittain et al. 2007) and in TTS (e.g. Najita et al. 2003; Salyk et al. 2011). The bands are rotationally excited up to high  $J$  ( $> 30$ ), resulting in  $T_{\text{rot}}$  between 900 and 2500 K.  $T_{\text{rot}}$  is much lower for  $^{13}\text{CO}$ ,  $\sim 250 \text{ K}$  (Brown et al. 2013). UV fluorescence can cause super-thermal level populations, as observed (Brittain et al. 2007) and modelled (Thi et al. 2013) in UV-bright HAEBEs where  $T_{\text{vib}} > 5000 \text{ K}$ , as well as in TTs (Bast et al. 2011; Brown et al. 2013). While some HAEBEs have CO extending to the dust sublimation radius (Salyk et al. 2011), others have evidence for significant inner disc gas clearing (Goto et al. 2006, Brittain et al. 2007, Pontoppidan et al. 2008, van der Plas et al. 2009). Thi et al. 2013, and van der Plas (Ph.D. Thesis) find that, in flaring discs,  $T_{\text{rot}} < T_{\text{vib}}$ , and the inner radius of CO,  $r_{\text{in}} \sim 10 \text{ AU}$ , while in self-shadowed discs,  $T_{\text{vib}} \lesssim T_{\text{rot}}$  and  $r_{\text{in}} \sim 1 \text{ AU}$ : flaring HAEBE discs thus have lower CO abundances in their inner regions than flat discs. In a recent paper, Maaskant et al. (2013) show that several group I sources (the flaring discs) have dust-depleted gaps separating an optically thin inner disc and a flaring outer disc. It has been proposed that dust-depleted regions are a typical property of group I discs. This geometry allows more radiation reaching the outer disc, so they can be heated more when compared to the group II (flat discs). For the TTS, Brown et al. (2013) found that most of the line profiles in TTS indicate that the CO emission originates in the disc plus a slow disc wind.

On the other end of the spectrum, CO low- $J$  pure rotational transitions ( $\Delta v = 0$ ) can be observed in the millimeter. These low- $J$  transitions originate from cold, optically thick CO located in the outer disc, and are routinely detected in HAEBE (e.g. Thi et al. 2001, Dent et al. 2005) and in TTS (e.g. Koerner & Sargent 1995; Öberg et al. 2010). As the lines are optically thick, the outer disc radius can be estimated from the line profile (e.g. Dent et al. 2005, Panić et al. 2008). In HAEBE discs, the dust temperature in the entire disc is high enough (at least 30 K) to avoid freeze-out of CO on the dust grains (e.g. Panic et al. 2009, Bruderer et al. 2012), while in TTS, this happens more frequently (e.g. Hersant et al. 2009).

The much less observed far-IR wavelength range covers rotationally-excited mid-to high- $J$  CO lines which probe temperatures intermediate between the low- $J$  sub-mm and the vibrationally-excited near-IR lines. Giannini et al. (1999) analysed ISO/LWS observations of 3 HAEBEs, covering rotational lines from  $J_{\text{up}} = 14$  to  $J_{\text{up}} = 19$ . Their modelling showed that the CO emission originates from a compact region (up to a few 100 AU) around the central star, and suggest that the stellar FUV radiation excites the CO.

CO far-IR lines in HAEBEs and TTS were also observed by DIGIT (Sturm et al. 2010) and GASPS (Meeus et al. 2012) with the instrument PACS (Poglitsch et al. 2010) onboard *Herschel* (Pilbratt et al. 2010). Bruderer et al. (2012; hereafter BR12) modelled pure rotational CO transitions in HD 100546 (Sturm et al. 2010). They showed that, in this disc, 1) in the disc surface, the gas temperature is decoupled from the dust temperature; 2) the low- $J$  ( $J < 10$ ) lines trace a radius between 70-220 AU, at a low scale height in the disc, the mid- $J$  ( $J < 20$ ) lines trace a radius of 35-80 AU, while the high- $J$  ( $J > 20$ ) lines trace the upper disc atmosphere at 20-50 AU. Therefore, the higher the

$J$ , the closer to the star is the region the transition traces; 3) the highest  $J$  lines are optically thin and scale with the amount of hot gas in the disc surface, while the lowest  $J$  lines are optically thick and scale with the outer disc radius. The authors also show that the rotational diagram of HD 100546 (including, besides PACS also APEX data of low- $J$  transitions) can be fitted with 3 components:  $T_{\text{rot}} \sim 60, 300$  and  $750 \text{ K}$ .

We now present PACS spectra of a much larger sample of HAEBEs and TTS observed within the DIGIT Open Time Key Project (OTKP; P.I. Neal Evans). These spectra show pure rotational transitions of CO with  $J_{\text{up}}$  from 14 up to 49, corresponding to  $E_{\text{up}}$  between 581 and 6724 K. Detections of O I, C II, OH,  $H_2O$ ,  $\text{CH}^+$  are reported in a companion paper by Fedele et al. (submitted; paper I). In Sect. 2, we present the sample and the observations, while in Sect. 3 we show the line detections and fluxes and construct rotational diagrams. In Sect. 4 we look into the UV luminosity and use a small disc model grid to explain our observations. In Sect. 5, we speculate on the impact of PAH luminosity and inner disc clearing on the CO emission, while in Sect. 6, we present our conclusions.

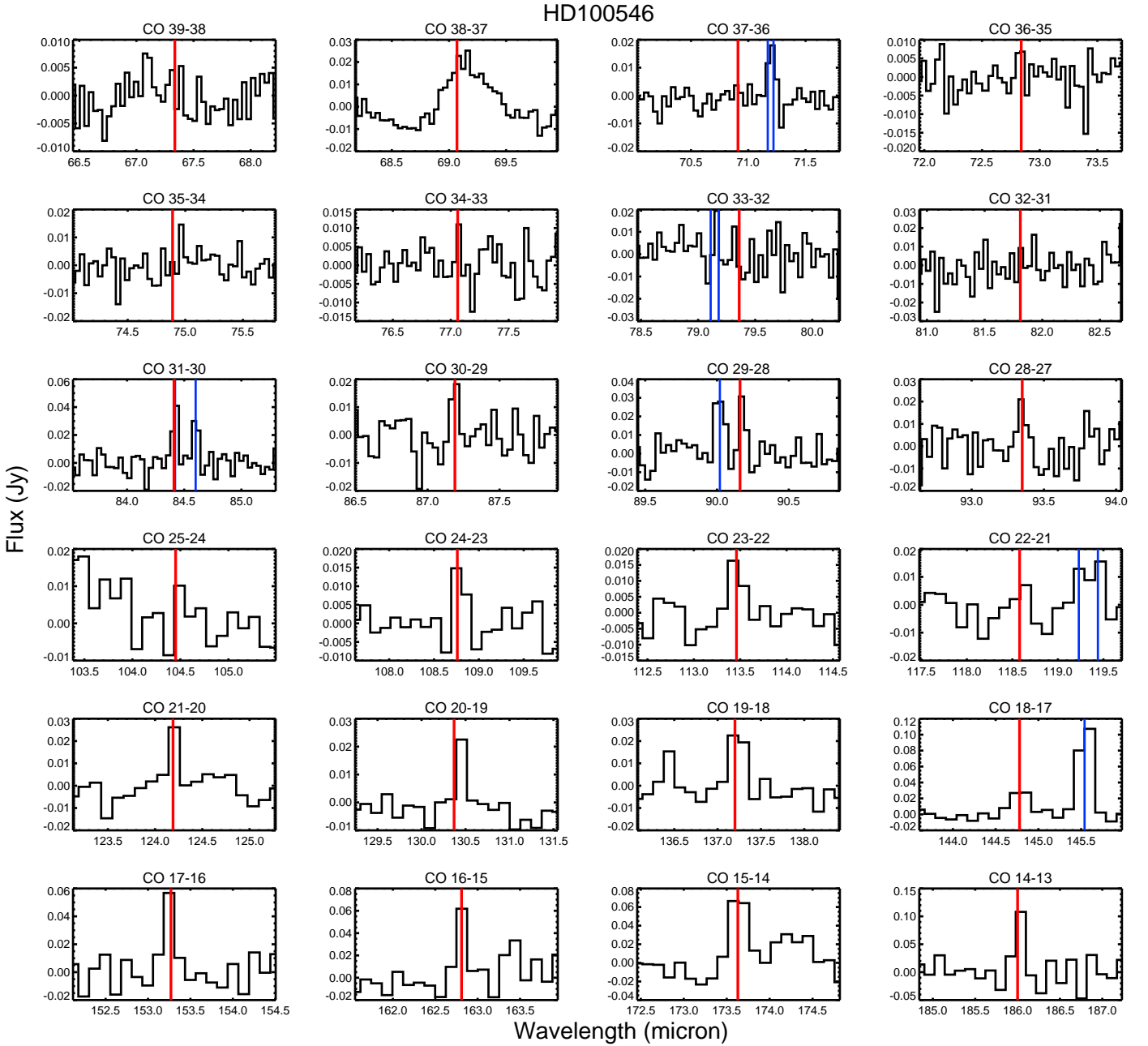
## 2. Sample and observations

Our sample consists of 22 Herbig Ae/Be stars and 8 T Tauri stars. The HAEBE sample has spectral types between B9 and F4, and is representative for the HAe stars, while the TTS sources tend to be distinct from typical TTS in some way (such as having a large amount of veiling, or the presence of a strong disc wind or outflow or a disc gap). We refer to Paper I for a discussion of the sample properties.

For each HAEBE star, we derived its disc group (I: flared discs, II: flat discs, in the classification of Meeus et al. 2001), and calculated  $L_{\text{UV}}$  by integrating the UV flux obtained from the IUE archive between 1150 and 2430 Å for the HAEBEs. For the TTS, we measured  $L_{\text{UV}}$  between 1250-1700 Å directly for a few sources. When direct measurements of FUV were not available, they were derived instead from observations of the HI P $\beta$  line and an empirical relationship between  $L_{\text{acc}}$  and P $\beta$  (Salyk et al. 2013), in conjunction with an empirical relationship between  $L_{\text{acc}}$  and  $L_{\text{UV}}$  (Yang et al. 2012). These results are listed in Table 1.

We obtained *Herschel*/PACS spectroscopy in SED range mode, covering the spectral range between 51 and 210  $\mu\text{m}$ . Not all sources were observed in the full range. For an overview of the observational settings and the reduction methods we refer to Paper I, where we also show the full range spectra for each object. In Fig. 1 we present a zoom in at the positions of the CO lines for HD 100546, while we show similar plots in Figs. A.1 to A.8 for those objects where CO was detected.

With the sensitivity of our spectra, we are able to achieve a typical S/N on the continuum of 100 and to detect a line with 3  $\sigma$  confidence when the line flux is higher than  $1 \times 10^{-17} \text{ W m}^{-2}$ , varying with the observed wavelength and level of continuum flux. Furthermore, at the edges of the bands, the spectra become more noisy, resulting in higher upper limits (for a more detailed discussion on this topic we refer to the DIGIT data overview paper by Green et al. 2013). For detected lines, we extracted the line fluxes using a Gaussian fit to the emission lines, using the RMS on the continuum (excluding the line) to derive a  $1\sigma$  error on the line flux. For non-detections, we give a  $3\sigma$  upper limit, also calculated from the continuum RMS. The derived line fluxes are listed in Table 2. The second row for each source is the flux density in the adjacent continuum.



**Fig. 1.** The spectra of HD 100546, centered on the CO lines, indicated in red. The OH line at  $84.42 \mu\text{m}$  blends with the CO  $J = 31 \rightarrow 30$  line. In blue, we indicate the positions of other lines ( $\text{CH}^+$  at  $90 \mu\text{m}$  and  $[\text{O I}]$  at  $145 \mu\text{m}$ ; rest are OH doublets).

### 3. Results

#### 3.1. Detections

We detected CO lines in only 5 HAEBE stars of our sample: AB Aur, HD 36112, HD 97048, HD 100546, and IRS 48. While all 5 detections toward HAEBEs occur for fairly nearby stars ( $d = 159 \pm 71 \text{ pc}$ ), there are many HAEBEs at similar distances without detections. All 5 HAEBEs with detections have group I (flaring) discs; there is no CO detection seen in a group II (flat) HAEBE disc. Within the group I sources, the sources with CO detections have the highest  $L_{\text{UV}}$  observed.

For the TTS, we detected CO in 4 objects: AS 205, a disc wind source (Bast et al. 2011), and a possible outflow source (Mundt 1984); S CrA and B: disc wind sources (Bast et al. 2011), RU Lup: a disc wind source (Bast et al. 2011), as well as an out-

flow source (Herczeg et al. 2005 and references therein); and DG Tau: an outflow source (e.g. Lavalley-Fouquet et al. 2000). An equivalent disc geometry classification as for the HAEBEs does not exist, so we could not compare the two samples in this regard. However, CO detections are only seen in TTS that show evidence for a strong disc wind (according to the line shape criterion defined in Bast et al. 2011), or a resolved outflow, or both. It is not yet known whether there is a correlation between the presence of disc winds and outflows, although several discs have signatures of both.

The highest observable transition is  $J = 49 \rightarrow 48$ , but the highest detected transition in our spectra is  $J = 36 \rightarrow 35$ , seen only in HD 100546 and the outflow source DG Tau. In Table A.1, we list the transitions, their wavelength and the upper level energy (in kelvin) that are detected in our spectra. The transition  $J$

**Table 2.** Observed CO line fluxes in  $\text{W m}^{-2} \times 10^{-18}$  (first row) and adjacent continuum flux density in Jy (second row).

Transition	$J=38 \rightarrow 37$	$J=37 \rightarrow 36$	$J=36 \rightarrow 35$	$J=35 \rightarrow 34$	$J=34 \rightarrow 33$	$J=33 \rightarrow 32$	$J=32 \rightarrow 31$	$J=31 \rightarrow 30^a$
AB Aur	< 100.5 134.8 Jy	< 95.3 134.3 Jy	< 100.7 135.5 Jy	< 73.8 136.6 Jy	< 100.3 134.8 Jy	< 79.5 133.1 Jy	< 77.9 129.7 Jy	92.1 (2.6) 132.0 Jy
HD 36112	< 21.8 20.5 Jy	< 25.2 20.5 Jy	< 38.4 20.6 Jy	< 24.3 20.3 Jy	< 20.3 20.3 Jy	< 25.1 20.0 Jy	< 24.9 19.1 Jy	< 29.5 19.1 Jy
HD 97048	< 42.8 65.8 Jy	< 45.7 66.6 Jy	< 38.2 68.1 Jy	< 33.1 68.5 Jy	< 42.4 70.3 Jy	< 37.6 69.1 Jy	< 40.2 66.0 Jy	56.6 (15.0) 68.5 Jy
HD 100546	< 107.4 172.0 Jy	< 82.9 162.4 Jy	52.9 (12.6) 160.6 Jy	< 44.1 159.5 Jy	53.1 (14.4) 156.7 Jy	< 84.5 148.6 Jy	< 65.3 139.7 Jy	139.7 (27.6) 141.7 Jy
IRS 48	< 28.7 48.9 Jy	< 23.0 47.2 Jy	< 37.5 46.4 Jy	< 31.2 46.6 Jy	< 28.4 45.1 Jy	< 37.9 42.6 Jy	< 38.6 39.8 Jy	< 33.7 39.4 Jy
AS 205	< 22.8 20.7 Jy	< 33.1 20.5 Jy	< 37.0 21.0 Jy	< 29.8 20.8 Jy	< 24.1 20.9 Jy	< 37.2 20.7 Jy	< 25.9 19.3 Jy	46.0 20.4 Jy
S CrA	< 24.0 23.6 Jy	< 33.2 24.0 Jy	< 37.9 24.5 Jy	< 28.3 24.3 Jy	< 30.4 24.6 Jy	< 42.6 24.4 Jy	< 30.8 23.7 Jy	< 40.8 24.5 Jy
DG Tau	< 15.4 26.5 Jy	< 42.4 26.6 Jy	25.7 (6.6) 26.7 Jy	< 18.9 26.6 Jy	24.7 (5.5) 26.7 Jy	< 47.6 26.1 Jy	19.8: (7.0) 25.2 Jy	128.3 (25.3) 26.2 Jy
	$J=30 \rightarrow 29$	$J=29 \rightarrow 28$	$J=28 \rightarrow 27$	$J=25 \rightarrow 24$	$J=24 \rightarrow 23$	$J=23 \rightarrow 22$	$J=22 \rightarrow 21$	
AB Aur	< 57.8 133.0 Jy	< 81.5 129.8 Jy	< 55.5 123.6 Jy	< 54.2 103.7 Jy	< 47.0 99.2 Jy	58.9 (12.4) 93.8 Jy	< 45.7 88.0 Jy	
HD 36112	< 27.6 19.7 Jy	< 22.7 19.4 Jy	< 32.3 19.0 Jy	< 17.7 15.9 Jy	< 13.3 15.5 Jy	< 11.0 14.6 Jy	< 9.1 13.7 Jy	
HD 97048	< 43.0 71.1 Jy	< 32.5 70.7 Jy	< 42.7 68.2 Jy	< 36.4 61.5 Jy	< 30.4 59.1 Jy	30.1 (8.7) 57.4 Jy	14.7: (6.6) 53.7 Jy	
HD 100546	73.4 (14.9) 139.6 Jy	78.6 (18.7) 135.6 Jy	81.5 (11.2) 126.1 Jy	< 77.1 107.9 Jy	71.3 (11.5) 100.5 Jy	78.4 (11.2) 91.5 Jy	< 42.0 83.2 Jy	
IRS 48	< 26.0 39.0 Jy	< 29.0 36.8 Jy	< 27.3 34.4 Jy	< 22.7 28.3 Jy	< 17.8 25.7 Jy	< 13.0 23.2 Jy	< 14.2 20.8 Jy	
AS 205	< 28.3 19.8 Jy	< 20.8 20.1	55.1 (7.3) 19.1 Jy	18.9 (5.4) 15.9 Jy	15.2 (4.8) 15.4 Jy	30.1 (3.7) 14.5 Jy	17.9 (3.8) 13.7	
S CrA	< 24.6 24.4 Jy	< 23.2 24.3 Jy	24.9 (6.4) 23.6 Jy	26.6 (6.5) 21.2 Jy	23.1 (5.7) 20.3 Jy	42.2 (4.9) 19.0 Jy	31.4 (10.6) 17.6 Jy	
DG Tau	36.4 (6.2) 26.5 Jy	41.3 (7.3) 26.0 Jy	51.5 (6.9) 25.5 Jy	39.8 (4.8) 21.4 Jy	38.4 (4.1) 20.5 Jy	64.9 (3.3) 19.4 Jy	40.2 (8.4) 18.5 Jy	
	$J=21 \rightarrow 20$	$J=20 \rightarrow 19$	$J=19 \rightarrow 18$	$J=18 \rightarrow 17$	$J=17 \rightarrow 16$	$J=16 \rightarrow 15$	$J=15 \rightarrow 14$	$J=14 \rightarrow 13$
AB Aur	< 35.0 83.9 Jy	39.2 (9.3) 80.5 Jy	< 29.8 72.7 Jy	49.6 (10.3) 73.5 Jy	40.7 (14.4) 64.9	< 27.0 63.8 Jy	64.0 (16.1) 50.6 Jy	< 30.1 38.0 Jy
HD 36112	< 8.4 13.2 Jy	7.9 (2.5) 12.8 Jy	< 8.2 12.5 Jy	< 12.4 12.3 Jy	< 11.4 12.2 Jy	< 12.8 12.0 Jy	14.1 (4.1) 11.0 Jy	16.0 (4.7) 8.2 Jy
HD 97048	< 15.3 55.1 Jy	< 21.5 53.3 Jy	< 19.5 54.2 Jy	25.8 (7.1) 58.2 Jy	32.4 (5.3) 58.8 Jy	< 24.5 58.1 Jy	49.1 (11.5) 54.3 Jy	< 23.8 43.9 Jy
HD 100546	65.0 (8.8) 75.1 Jy	49.9 (5.7) 68.4 Jy	64.7 (8.5) 64.1 Jy	71.5 (6.9) 60.5 Jy	73.9 (10.4) 57.0 Jy	58.8 (9.7) 52.8 Jy	88.3 (9.7) 45.9 Jy	60.0 (8.3) 35.0 Jy
IRS 48	9.9 (3.0) 18.7 Jy	12.3 (4.1) 17.0 Jy	11.1 (3.7) 15.7 Jy	13.4 (2.8) 14.4 Jy	22.7 (4.7) 13.3 Jy	12.0: (4.8) 12.3 Jy	< 18.4 10.2 Jy	< 21.5 7.2 Jy
AS 205	22.1 (2.3) 13.1 Jy	20.3 (2.8) 12.8 Jy	21.6 (2.4) 12.7 Jy	18.5 (2.6) 12.7 Jy	18.9 (3.9) 12.8 Jy	13.0 (3.8) 12.6 Jy	24.0 (5.5) 11.9 Jy	16.3 (4.2) 9.1 Jy
S CrA	34.1 (2.5) 16.9 Jy	26.7 (2.7) 16.1 Jy	34.2 (2.9) 15.7 Jy	44.2 (3.9) 15.3 Jy	44.7 (4.3) 15.0 Jy	52.4 (4.7) 14.7 Jy	50.5 (7.5) 13.4 Jy	39.7 (6.6) 9.8 Jy
DG Tau	46.4 (2.0) 17.6 Jy	42.5 (2.0) 16.9 Jy	45.9 (2.3) 16.8 Jy	50.0 (2.9) 16.5 Jy	47.7 (2.9) 16.2 Jy	44.9 (3.5) 15.9 Jy	67.7 (4.5) 14.4 Jy	31.0 (3.9) 10.4 Jy
RU Lup	< 9.0 4.2 Jy	10.8 (2.9) 4.0 Jy	11.5 (2.1) 4.1 Jy	–	–	–	–	–

**Notes.** <sup>(a)</sup> The transition  $J = 31 \rightarrow 30$  is a blend with OH, so the values listed are upper limits. The transitions  $J = 26 \rightarrow 25$  at  $100.46 \mu\text{m}$  and  $J = 13 \rightarrow 12$  at  $200.41 \mu\text{m}$ , are not listed, as the data are too noisy to give a meaningful upper limit.

$= 31 \rightarrow 30$  is at the same wavelength as an OH line; therefore we consider it to be an upper limit in our further analysis.

### 3.2. Rotation Diagrams

Since we covered a wide range in transitions it is possible to analyse our data with the aid of rotational diagrams (see

Goldsmith & Langer 1999). We constructed rotational diagrams for the sources with at least three CO line detections (see Fig. 2), and list the derived  $T_{\text{rot}}$  in Table 3. We derived the error on  $T_{\text{rot}}$  by calculating the 2 extreme temperatures that are still consistent with the errors on the line fluxes. We define the Y axis of the diagram as  $\ln(d\Omega N_u / g_u) = \ln(4\pi F_u / (A_u h\nu g_u))$  such to include the solid angle  $\Omega$  of the emission, since the CO ladder

**Table 1.** Some properties of the sample.

HAEBE	Disc group	$L_{UV}/L_{\odot}$	$L_{PAH}$	CO
		1150-2430 Å	( $L_{\odot}$ )	
AB Aur	I	4.63	0.203	Y
HD 35187	II	2.23	0.034	n
HD 36112	I	1.32	0.029	Y
HD 38120	I	–	0.116	n
HD 50138	II	–	–	n
HD 97048	I	7.69	0.367	Y
HD 98922	II	–	–	n
HD 100453	I	0.29	0.038	n
HD 100546	I	7.22	0.098	Y
HD 104237	II	1.54	–	n
HD 135344 B	I	> 0.11 <sup>a</sup>	0.015	n
HD 139614	I	0.39	0.022	n
HD 141569 A	II/TO	6.83	0.007	n
HD 142527	I	> 0.15 <sup>a</sup>	0.149	n
HD 142666	II	0.37–0.68	0.028	n
HD 144432	II	–	0.003	n
HD 144668	II	1.55–2.94	–	n
IRS 48	I	4.63	0.386	Y
HD 150193	II	8.53	–	n
HD 163296	II	3.21–5.58	–	n
HD 169142	I	0.45	0.093	n
HD 179218	I	–	–	n
TTS	$\log L_{acc}/L_{\odot}$	$L_{UV}/L_{\odot}$	CO	
		1250-1700 Å	det.	
DG Tau	-0.13	0.016 <sup>b</sup>	Y	
HT Lup	-0.65	0.006 <sup>b</sup>	n	
RU Lup	-0.42	0.01	Y	
RY Lup	–	0.002	n	
AS 205 A/B	-0.15/-0.37	0.016/0.01	Y	
SR 21	–	0.0003 <sup>b</sup>	n	
RNO90	-0.16	0.016 <sup>b</sup>	n	
S CrA A/B	-0.10/-0.59	0.016/0.006 <sup>b</sup>	Y	

**Notes.** HAEBE disc group classification from Meeus et al. (2001), Acke et al. (2010) and Maaskant et al. (2013). 'TO' stands for 'Transition Object', indicating that it lacks a near-IR excess.  $L_{UV}$  is determined differently for the HAEBEs and the TTS, as described in the text (see Sect. 2); <sup>(a)</sup>  $L_{UV}$  measured on the model photosphere (no UV observations available); <sup>(b)</sup>  $L_{UV}$  estimated from accretion luminosities.  $L_{PAH}$  is from the survey by Acke et al. (2010) which includes our HAEBE sample; with '–' we indicate a non-detection. In the column 'CO det.' we indicate whether there was CO emission detected in our PACS spectra (Y) or not (n).

could emerge from different regions in the disc (see discussion in BR12). For the HAEBEs, we obtain  $T_{rot}$  between 200 and 350 K. For HD 100546 we also need a second component to fit the rotational diagram, with  $T_{rot} \sim 900$ –1000 K. Also for AB Aur and HD 97048 a second component could be present, but in these cases we do not have enough line detections to derive a temperature. More sensitive data could reveal higher  $J$  emission lines also for these sources. The result for HD 100546 is similar to that found in an earlier analysis (Sturm et al. 2010). We note that, for a few transitions (around  $22 \rightarrow 21$ , or  $E_{up} = 1397$  K), the fit predicts a too high line flux when compared to the observations. It is not clear whether to attribute this to bad flux calibration of this wavelength range ( $\sim 118 \mu\text{m}$ ) and/or due to the low quality of this spectral region. The mean of the HAEBE  $T_{rot}$  values, excluding the hot component in HD100546, is  $\langle T_{rot} \rangle = 271 \pm 39$  K. For TTS, the temperatures are higher - between 350 and 600 K, with the outflow source DG Tau having the highest  $T_{rot}$ :  $582 \pm$

**Table 3.**  $T_{rot}$  derived from the rotational diagrams.

Object	$T_{rot}$ (K)	Notes
AB Aur	270 <sup>+53</sup> <sub>-39</sub>	Highest $E_{up}$ not fitted, 2 components?
HD 36112	242 <sup>+41</sup> <sub>-31</sub>	
HD 97048	234 <sup>+36</sup> <sub>-27</sub>	Highest $E_{up}$ not fitted, 2 components?
HD 100546	276 <sup>+19</sup> <sub>-17</sub>	Needs 2 temperature components
	935 <sup>+81</sup> <sub>-69</sub>	
IRS 48	334 <sup>+71</sup> <sub>-50</sub>	
AS 205	501 <sup>+41</sup> <sub>-36</sub>	Highest $E_{up}$ not fitted, 2 components?
S CrA	375 <sup>+14</sup> <sub>-12</sub>	
DG Tau	582 <sup>+12</sup> <sub>-11</sub>	

12 K. The mean value is  $486 \pm 104$  K, significantly higher than the mean for the HAEBEs.

The rotational temperatures of 200–350 K in HAEBE discs are lower than those typically found from  $^{12}\text{CO}$  ro-vibrational fundamental ( $v = 1 \rightarrow 0$ ) near-IR transitions (Salyk et al. 2011). They are comparable, however, to the rotational temperatures derived from the  $^{13}\text{CO}$  ro-vibrational fundamental lines, which probe somewhat further out into the disc (Brown et al. 2013).

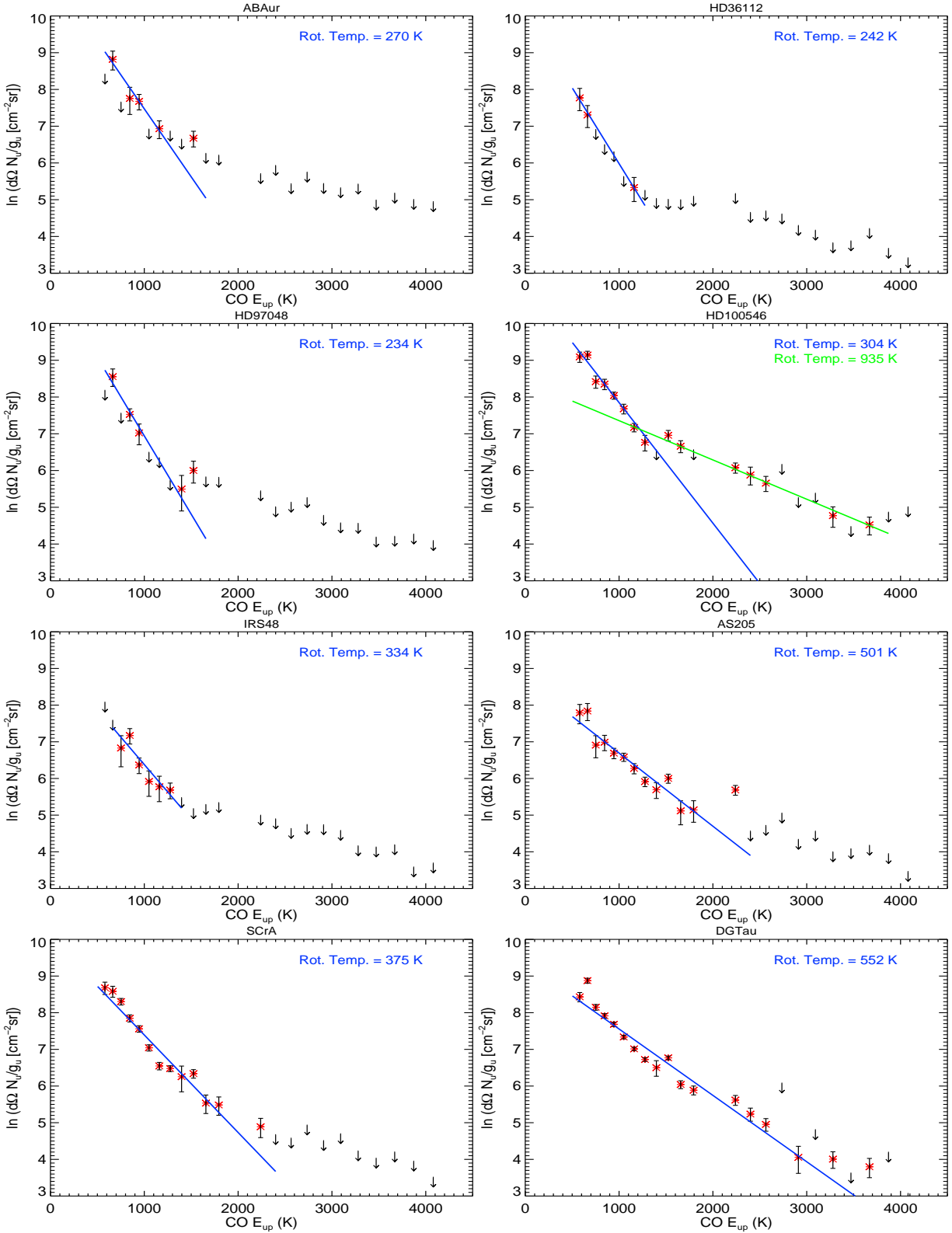
We note that converting  $T_{rot}$  derived from a rotation diagram to a kinetic temperature is not straightforward, as it assumes optically thin emission. Even if the lines are thin,  $T_{rot}$  equals  $T_{gas}$  only if the excitation is in thermal equilibrium with the gas, i.e., if the density is high enough. Indeed, Bruderer et al. (2012) discussed that the CO ladder reflects emission from the disc atmosphere from a range of radii ( $\sim 20$ –80 AU) at different temperatures, and that the shape of the CO ladder can depend on several factors: 1) the gas temperature and density; 2) for the low- $J$  to mid- $J$  lines, optical depth effects; and 3) the amount of emitting molecules if the line is optically thin, or size of emitting region, if the line is optically thick. For HD 100546, Bruderer et al. (2012) predicted that lines up to  $J = 16 \rightarrow 15$  are optically thick. Assuming that the model for HD100546 is relevant for all our sources, the lines we observe are mainly optically thin so that the gas temperature and density are the main factors, assuming a normal CO abundance.

## 4. Analysis

### 4.1. Relation with the (UV) luminosity

Does the far-IR CO line emission depend on stellar luminosities? We compared average HAEBE and TTS CO line luminosities for the  $J = 17 \rightarrow 16$  transition, and found that they are remarkably similar:  $(2.06 \pm 0.7) \times 10^{-5} L_{\odot}$  for the HAEBEs and  $(2.06 \pm 1.0) \times 10^{-5} L_{\odot}$  for the TTS, while the average bolometric luminosities are  $86.0 L_{\odot}$  and  $5.0 L_{\odot}$  for the HAEBEs and TTS, respectively. This indicates that there is no correlation between the average line luminosity and  $L_{bol}$ .

But what about the UV luminosity? Models suggest that UV radiation is important for the gas heating and the excitation of the molecules, and one of the main factors determining the strength of the emission lines observed in the far-IR (e.g. Woitke et al. 2010; Kamp et al. 2011). Also BR12 showed the importance of the temperature of the stellar radiation field with respect to the amount of line flux (see their Fig. 13). Because of self-shielding, the CO molecule can survive the UV radiation in the surface layers and the CO emission lines trace the heated disc surface. Since CO is an important coolant, an increased amount of heating leads to the detection of higher  $J$  lines, as well as higher line luminosity.



**Fig. 2.** The rotational diagrams of the sources with at least 3 CO emission line detections (marked with a red asterisk, upper limits with an arrow). We also show a fit to the ladder, from which the rotational temperature can be derived.

HAEBE stars with strong  $L_{UV}$  and flaring discs (group I) often have high [O I] 63  $\mu\text{m}$  line flux (Meeus et al. 2012; paper I). Furthermore, sources with higher [O I] 63 fluxes also have higher

far-IR CO fluxes, as is shown in Meeus et al. (2012) for the CO  $J = 18 \rightarrow 17$  transition.

In HAEBEs, the bulk of the UV radiation is stellar, and the relative contribution from accretion is small. In contrast, the ac-

cretion luminosity is the most important contributor to the UV luminosity of TTS (e.g. Yang et al. 2012), as the relatively cool stellar photospheres produce very little UV flux. In Sect.3, we showed that  $T_{\text{rot}}$  is higher in our sample of TTS than in the HAEBEs. This can perhaps be attributed to a difference in gas heating mechanism, which is stellar in HAEBEs, while it is due to accretion and could also be due to shocks in the TTS. Podio et al. (2012) and Karska et al. (2013) show that, in outflow sources, heating by shocks is necessary to explain the observed molecular line emission. In our TTS sample, at least two sources with CO detections (DG Tau and RU Lup) show evidence for a jet.

Given the differences in origin of the UV radiation, important in the context of gas heating mechanisms, we will discuss HAEBEs and TTS separately in the following sections.

#### 4.1.1. HAEBEs

The five HAEBEs with CO detections all have flaring discs, with a hot disc atmosphere. Four out of five detections are in stars with a relatively high  $L_{\text{UV}}$ , but there are also non-detections at  $L_{\text{UV}}$  values similar to those of the detections, with the transitional disc HD 141569 A having the highest value. Unfortunately, the modest ranges in  $L_{\text{UV}}$  and line luminosity, coupled with the small sample size, make it impossible to statistically test whether the line luminosity correlates with  $L_{\text{UV}}$ .

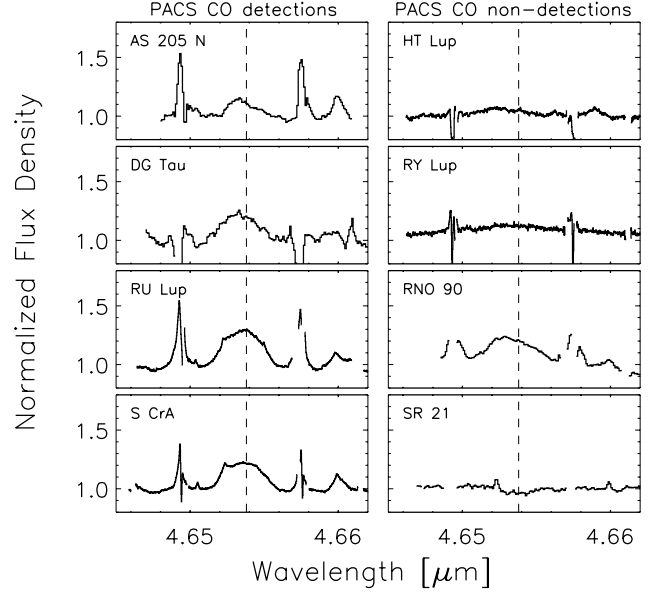
#### 4.1.2. TTS

Salyk et al. (2013) show that the accretion rate can also be correlated with the strength of the H P $\beta$  ( $n = 7 \rightarrow 4$ ) line at  $4.65 \mu\text{m}$ , which was observed in all of the TTS in our sample. In the following, we use data from that paper, taken with either VLT/CRIRES or Keck/NIRSPEC. In Fig. 3 we plot the H P $\beta$  line emission both for sources that do show the PACS CO lines and those that do not. All the sources with CO detections have strong H P $\beta$  lines, while most of the sources without – with the exception of RNO 90 – have weak H P $\beta$  lines. Also the rovibrational CO lines appear to be stronger in the sources with PACS detections, especially the  $\nu = 2 \rightarrow 1$  R(8) line at  $4.6598 \mu\text{m}$ , which is enhanced by UV radiative excitation (Brown et al. 2013). This implies a connection between accretion rate and CO detections, perhaps due to the UV radiation provided by the accretion column. However, a direct connection with the value of  $L_{\text{acc}}$  is not found. We see a similar spread in  $L_{\text{acc}}$  for the detections as the non-detections, so that there is no clear correlation between these variables.

#### 4.2. Thermo-chemical models of the mid- to high- $J$ CO emission.

To explain the trend that far-IR CO lines are only detected towards flared discs, we ran a grid of thermo-chemical models introduced by Bruderer et al. (2012). These models solve for the dust radiative transfer, the chemistry and the thermal balance in a self-consistent way. Details of the model and benchmark tests are reported in BR12. In that paper, the mid- to high- $J$  CO emission of HD 100546 is reproduced together with the fine structure lines of [O I] for a model tailored specifically to that disc. Here, we run a grid of generic disc models using a parameterized density structure. The surface density profile  $\Sigma(r)$  of the disc varies as

$$\Sigma(r) \propto r^q \quad (1)$$



**Fig. 3.** Observations of H P $\beta$  for the TTS sample, line position indicated with the vertical dashed line. Left: sources for which we have CO detections, right: sources for which CO was not detected with PACS.

while the vertical density structure  $\rho(r, z)$  is a Gaussian

$$\rho(r, z) \propto \Sigma(r) \cdot \exp(-1/2(z/H(r))^2) \quad (2)$$

The scale-height  $H(r)$  is given by the power-law

$$H(r) = H_0 \left( \frac{r}{100\text{AU}} \right)^{\psi+1} \quad (3)$$

The parameters assumed in the grid are given in Table 4. We vary the disc mass  $M_{\text{disc}}$  and the flaring parameter  $\psi = 0.0, 0.1, 0.2$  to study the dependence of the CO lines on these two parameters.

As a word of caution, we note that thermo-chemical modeling is prone to large uncertainties, in particular in the gas temperature calculation (Röllig et al. 2007). We thus refrain from fitting individual objects, but aim to reproduce the main trends found in the observations.

How does the flaring parameter affect the temperature structure? In Figure 4, the density, gas-temperature, and CO abundance profile of models with varying flaring parameters,  $\psi = 0.0, 0.1$  and  $0.2$ , and  $M_{\text{disc}} = 10^{-2} M_{\odot}$  are shown. The figures are plotted such that the axes are distance-normalised height ( $z/r$ ) versus  $\log(r)$ . In the model without flaring ( $\psi = 0.0$ ) there is always an attenuating column of gas and dust between the star and regions with density  $\gtrsim 10^6 \text{ cm}^{-3}$ . This density corresponds to the critical density of the CO  $J = 16 - 15$  transition ( $E_{\text{up}} = 750 \text{ K}$ ), needed to excite the line collisionally. The mass of gas which has a temperature high enough ( $T > 750 \text{ K}$ ) to excite the PACS CO lines,  $M_{\text{COex}}$ , is – in any of the models – small compared to the total disc mass ( $< 0.5\%$ ). However, for larger flaring parameters, more gas can be irradiated and heated directly by the star to temperatures high enough for the excitation of the high- $J$  CO lines: for  $\psi = 0.0$ ,  $M_{\text{COex}} = 4.2 \times 10^{-6} M_{\odot}$ , for  $\psi = 0.1$ ,  $M_{\text{COex}} = 2.0 \times 10^{-5} M_{\odot}$  and for  $\psi = 0.2$ ,  $M_{\text{COex}} = 4.5 \times 10^{-5} M_{\odot}$ ; an



**Table 4.** Parameters employed in the thermo-chemical models

Parameter	Value
Disc mass	$M_{\text{disc}} = 0.1, 10^{-2}, 10^{-3}, 10^{-4} M_{\odot}$
Flaring angle	$\psi = 0.0, 0.1, 0.2$
Inner radius	$r_{\text{in}} = 0.383 \text{ AU}^a$
Outer radius	$r_{\text{out}} = 400 \text{ AU}$
Scale height at 100 AU	$H_{100 \text{ AU}} = 10 \text{ AU}$
Surface density power-law	$q = -1$
Stellar luminosity	$L_* = 30 L_{\odot}$
Stellar temperature	$T_* = 10^4 \text{ K}$
Stellar X-ray luminosity	$L_X = 10^{29} \text{ erg s}^{-1}$
Gas-to-dust mass ratio	$g/d=100$
Distance	$d = 150 \text{ pc}$
Inclination	$i = 30^\circ$
Grain size	$a = 0.1 - 10 \mu\text{m}$
Grain size distribution	$dn/da \propto a^{-3.5}$
Grain composition	ISM (Weingartner & Draine 2001)

**Notes.** <sup>(a)</sup> Dust sublimation radius,  $0.07 \sqrt{L_*/L_{\odot}}$  AU (Dullemond et al. 2001).

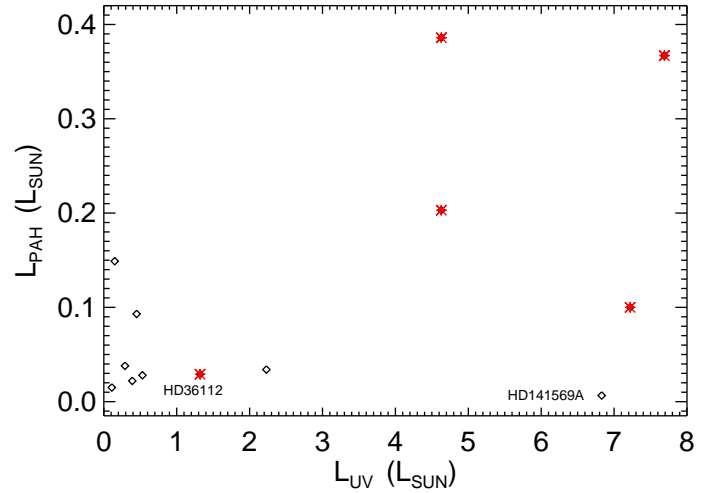
increase up to a factor 10 with increasing flaring. Furthermore, the radial extent of the warm region also increases with amount of flaring. This is of importance, since BR12 find that lines up to  $J = 16 - 15$  can be optically thick so that the size of the emitting area determines the amount of line flux.

The abundance of CO (Figure 4g, 4h and 4i) is dominated by photodissociation in the upper atmosphere and the inner rim of the disc. The “warm-finger” of CO is produced by CO formation through the reaction of  $\text{C}^+$  with  $\text{H}_2$  to  $\text{CH}^+$  which only proceeds at high gas temperature (Jonkheid et al. 2007; Agúndez et al. 2008). Starting from  $\text{CH}^+$ , a chain of reactions through  $\text{CO}^+$  and  $\text{HCO}^+$  then leads to CO.  $\text{CH}^+$  is detected in both HD 97048 and HD 100546 (Thi et al. 2011; paper I). The CO lines discussed in this section form at large heights in the disc atmosphere and are not affected by any chemistry lower in the disc.

The CO ladder derived from the grid of models is shown in Figure 5. Lines with  $J_{\text{up}} \leq 7$  are convolved to the beam of the APEX telescope which has been used to detect these lines towards Herbig discs (e.g. Panić et al. 2010). Higher  $J_{\text{up}}$  lines are convolved to the beam of the PACS instrument. Typical PACS detection limits are shown by the example of AB Aur. We find that indeed the flux in the PACS lines depends considerably on the flaring of the disc. This is a direct result of the increasing mass of several 100 K warm gas with the flaring parameter  $\psi$ .

On the other hand, the shape of the CO ladder does not vary significantly with disc mass, as long as  $M_{\text{disc}} > 10^{-3} M_{\odot}$ . While the CO lines above  $J_{\text{up}} \sim 16$  are optically thin, the equilibrium of gas heating and cooling processes yields similar amounts of gas warm enough to excite the CO lines. This result is different from the findings of BR12, because they leave the dust structure unchanged and vary the gas-to-dust ratio. In the models presented here, we vary both gas and dust mass and keep the gas-to-dust ratio constant. It is the amount of dust which absorbs the impinging stellar light that is key for the heating of the gas.

We conclude from this grid of thermo-chemical models, that the structure of the disc, and in particular the flaring which allows direct stellar irradiation of a larger volume of gas, is key for the understanding of the CO ladder observed by PACS. Non-flared discs produce too low line emission flux to be detected in our spectra.



**Fig. 6.**  $L_{\text{PAH}}$  as a function of  $L_{\text{UV}}$  for the HAEBE sample. The red asterisks indicate sources where CO was detected in our spectra, the black diamonds the sources with non-detections.

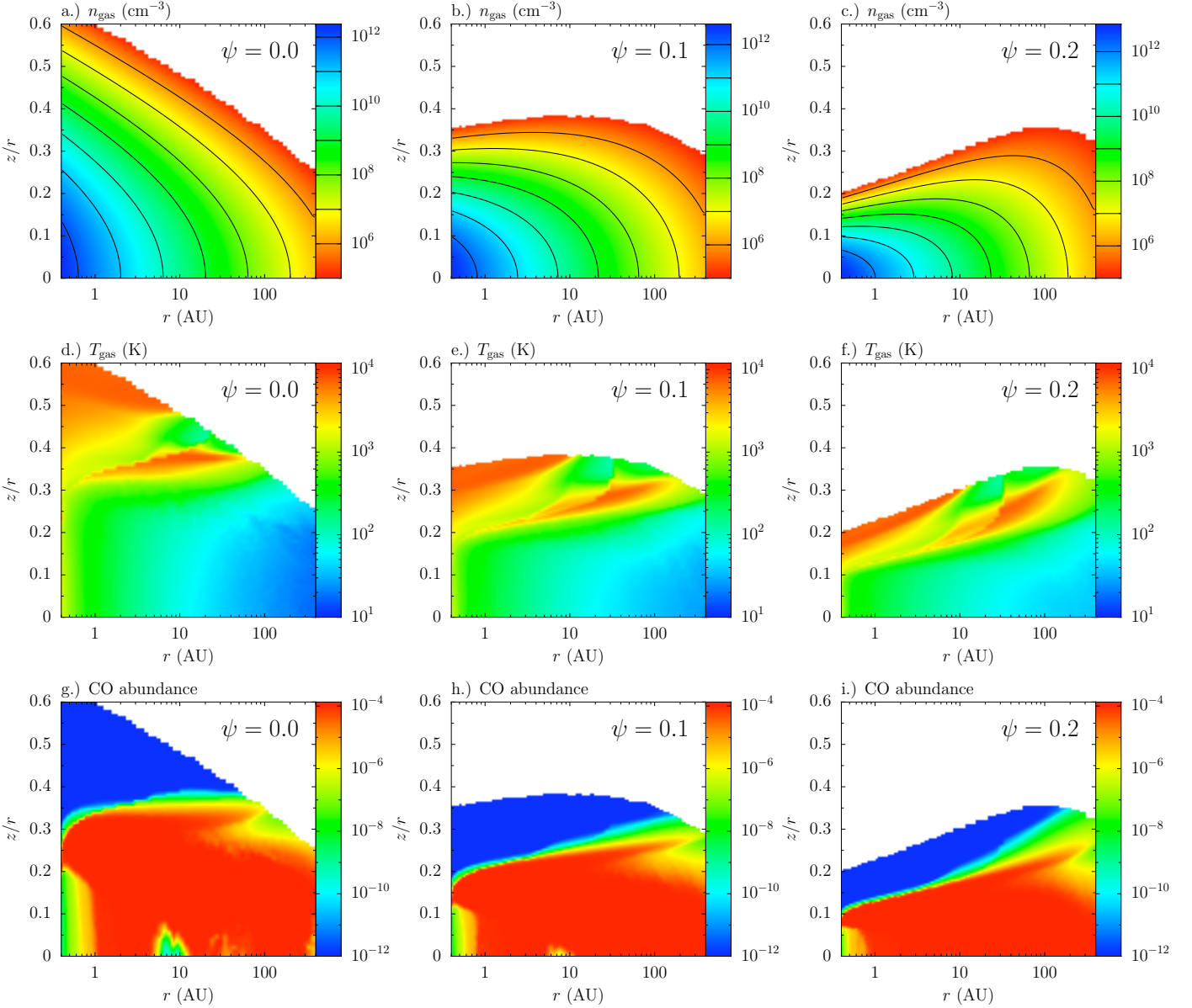
## 5. Discussion

What other parameters can influence the strength of the CO emission? In what follows, we speculate about the influence that the PAH luminosity and the inner disc clearing can have on the far-IR CO emission. While PAHs are frequently detected in HAEBEs (up to 70%; Acke et al. 2010), they are seen in at most 15% of T Tauri discs (Geers et al 2006; Oliveira et al. 2007, 2010); therefore we concentrate our discussion on PAHs observed in HAEBEs.

### 5.1. PAH luminosity

When present, PAHs contribute significantly to disc heating, absorbing UV photons in the upper disc layer after which they heat the disc through the photoelectric effect; as such they also have an influence on the observed line strengths (e.g. Kamp & Dullemond 2004; Bruderer et al. 2012). Therefore, we searched for a link between the PAH luminosity and the observed CO emission. If we consider the sources with the highest  $L_{\text{UV}}$  ( $> 4 L_{\odot}$ ; AB Aur, HD 97048, HD 100546 - group I, and HD 141569 A, HD 150193 and HD 163296 - group II), we see that it contains equal amounts of sources with flaring and non-flaring discs, but the group II sources lack CO far-IR emission. As the amount of  $L_{\text{UV}}$  is not solely determining the strength of the CO lines, we now also take the PAH emission into account. In Table 1, we list  $L_{\text{PAH}}$  for those objects where PAH bands are detected, while in Fig.6 we plot the  $L_{\text{PAH}}$  as a function of  $L_{\text{UV}}$  for both sources with and without CO detections. The group II sources HD 150193 and HD 163296 do not show PAH emission features, while the transitional disc HD 141569 A only has weak PAH bands when compared to the group I sources:  $L_{\text{PAH}} \sim 0.007 L_{\odot}$  versus 0.030 to 0.39  $L_{\odot}$  for the 5 HAEBEs with CO detections. This suggest that strong PAH emission, in addition to strong UV luminosity, enhances CO far-IR emission, consistent with the non-detection in HD 141569 A. However, the PAH luminosity does not uniquely determine the CO line flux. It is interesting in this context to mention studies of the ro-vibrational bands of CO at  $4.7 \mu\text{m}$ , revealing that HD 97048, HD 100546 and HD 141569 A have UV fluorescence, so that  $T_{\text{vib}} > 5600 \text{ K}$ , while their  $T_{\text{rot}}$  is distinct:  $\sim 1000 \text{ K}$  for the first two, and  $\sim 250 \text{ K}$  for HD 141569 A (van der Plas, Ph.D.; Brittain et al. 2007), again indicating that the PAH





**Fig. 4.** Model density ( $n_{\text{gas}}$ , top panels) gas-temperature ( $T_{\text{gas}}$ , center panels) and CO abundance ( $n_{\text{CO}}/n_{\text{gas}}$ , bottom panels) of thermo-chemical models with  $M_{\text{disc}} = 10^{-2} M_{\odot}$  and different flaring parameter  $\psi=0.0, 0.1$  or  $0.2$  (left to right columns).

luminosity is an important factor in the context of gas heating. However, BR12 showed that, in their model of HD 100546, a change in the PAH abundance changes the high- $J$  flux by less than a dex, leaving flaring as the most important parameter determining CO line fluxes.

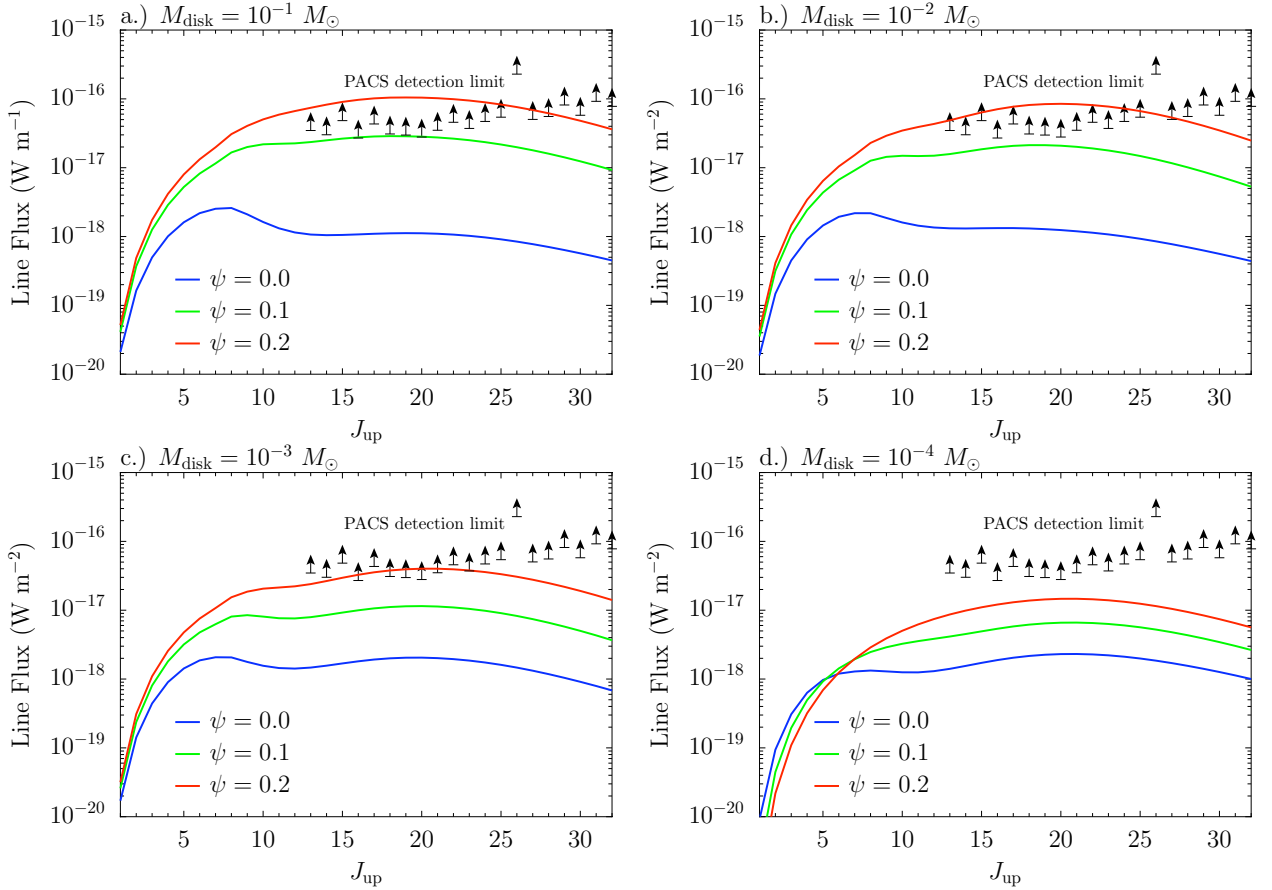
### 5.2. Inner disc clearing

Based on a small sample of group I sources with spatially resolved mid-IR images, Maaskant et al. (2013) suggest that group I sources have dust-depleted regions in the inner disc ( $\lesssim 50$  AU) that let the radiation penetrate further out in the disc. As a result, the outer regions, most notable the inner edge of the outer disc, experience more heating causing an excess at mid- to far-IR wavelengths. On the other hand, no flat (group II) discs have reported gaps in the literature. This suggests that these discs are relatively more self-shadowed and consequently cooler in the outer parts of the disc. In our HAEBE sample with CO detec-

tions, HD 97048, HD 100546, IRS 48, HD 36112 and AB Aur all have dust-depleted inner regions (Maaskant et al. 2013 for HD 97048; Bouwman et al. 2003 for HD 100546; Geers et al. 2007, Brown et al. 2012 and van der Marel 2013 for IRS 48; Isella et al. 2010 for HD 36112; Honda et al. 2010 for AB Aur). This indeed suggests that inner dust clearing can result in more efficient heating of the outer layers, so that the amount of warm CO is increased.

### 5.3. Summary

The discussion above suggests that the CO line luminosity in HAEBEs can, besides dust and gas temperature decoupling in the surface layers (due to flaring) and high UV luminosity, also be enhanced by a combination of 1) PAH heating and 2) enhanced UV penetration of the outer disc due to a dust-depleted inner region. We expect these factors to also be inter-linked, but



**Fig. 5.** Model CO ladder for the models with different gas mass  $M_{\text{disc}}$  and flaring parameter  $\psi$ . The lines with  $J_{\text{up}} \leq 7$  are convolved to the APEX beam at the appropriate frequency, the higher  $J_{\text{up}}$  to PACS. Black arrows indicate the typical PACS detection limit, extracted from the AB Aur spectrum.

a detailed parameter study of disc models would be needed to explain the causality.

## 6. Conclusions

We analysed PACS spectra covering 53.5 to 190  $\mu\text{m}$  to study the far-IR CO ladder in a sample of HAEBE and TTS. Our results can be summarised as follows:

1. Out of 22 HAEBEs and 8 TTS, we detected CO emission lines in only 5 HAEBE (23%) and 4 TTS (50%).
2. In HAEBEs, the far-IR CO lines are only detected in flaring discs, indicating that the disc geometry (presence of a hot disc atmosphere) is important in creating detectable line emission. TTS with detections have evidence for a disc wind and/or outflow.
3. The highest  $J$  transition ( $J = 36 \rightarrow 35$ ), with  $E_{\text{up}} = 3669$  K) was observed in HD 100546 and the outflow source DG Tau.
4. We constructed rotational diagrams for the objects with at least 3 CO detections, and derived  $T_{\text{rot}}$  between 200 and 500 K. The mean values of the warm components are  $\langle T_{\text{rot}} \rangle = 271 \pm 39$  K for the HAEBEs and  $\langle T_{\text{rot}} \rangle = 486 \pm 104$  K for the TTS. The HAEBE HD 100546 is the only object that clearly needs a second, hot component of  $\sim 900$  K, but other objects might also reveal a hot component when observed with a more sensitive instrument.
5. We analysed the observed line fluxes with a small grid of thermo-chemical models. We found that an increased

amount of flaring increased the CO line flux; a certain amount of flaring is necessary for the lines to become detectable with PACS and can increase the line flux by a factor 10. This is a direct result of the increase in warm gas mass with increasing amount of flaring where  $T_{\text{gas}}$  and  $T_{\text{dust}}$  are decoupled. Furthermore, we found that the disc mass is not a sensitive parameter, as long as it is higher than a few  $10^{-4} M_{\odot}$ .

6. For the HAEBEs, amongst the group I sources, the ones with highest  $L_{\text{UV}}$  have detectable CO lines.
7. In TTS, sources with strong Pf- $\beta$  lines (a tracer of accretion rate) tend to have CO emission, perhaps because of the UV heating provided by the accretion column. However, a quantitative connection between  $L_{\text{acc}}$  and CO detections is not yet clear.
8. We suggest that both strong PAH luminosity and the presence of a dust-depleted inner disc region can increase disc heating, and by consequence, enhance the far-IR CO line luminosities.

*Acknowledgements.* We would like to thank the PACS instrument team for their dedicated support. G. Meeus is supported by Ramon y Cajal grant RYC-2011-07920. B. Montesinos is partly supported by AYA-2011-26202. Support for this work, part of the Herschel 'Open Time Key Project' Program, was provided by NASA through an award issued by the Jet Propulsion Laboratory, California Institute of Technology. PACS has been developed by a consortium of institutes led by MPE (Germany) and including UVIE (Austria); KUL, CSL, IMEC (Belgium); CEA, OAMP (France); MPIA (Germany); IFSI, OAP/AOT, OAA/CAISMI, LENS, SISSA (Italy); IAC (Spain). This development has been

supported by the funding agencies BMVIT (Austria), ESA-PRODEX (Belgium), CEA/CNRS (France), DLR (Germany), ASI (Italy), and CICT/MCT (Spain). This research has made use of the SIMBAD database, operated at CDS, Strasbourg, France.

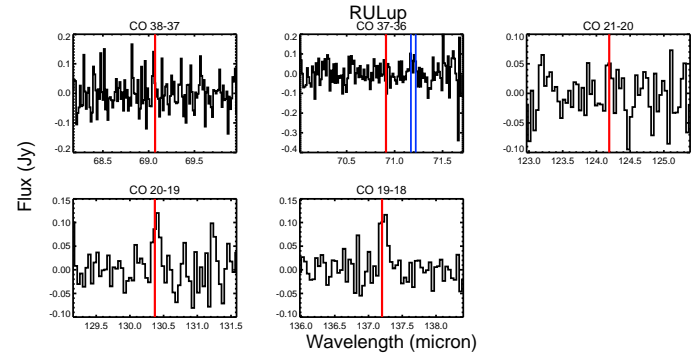
Williams, J.P. and Cieza, L.A. 2011, *ARA&A* 49, 67  
 Woitke, P., Pinte, C., Tilling, I., et al. 2010, *MNRAS* 405, L26  
 Yang, H., Herczeg, G.J., Linsky, J.L. et al. 2012, *ApJ* 744, 121

## References

- Acke, B., Bouwman, J., Juhász, A. et al. 2010, *ApJ* 718, 558  
 Agúndez, M., Cernicharo, J. and Goicoechea, J.R. 2008, *A&A* 2008, 483, 831  
 Bary, J.S., Weintraub, D.A., Shukla, S.J. et al. 2008, *ApJ* 678, 1088  
 Bast, J.E., Brown, J.M., Herczeg G.J. et al. 2011, *A&A* 527, 119  
 Benisty, M., Tatulli, E., Ménard, F. and Swain, M.R. 2010, *A&A* 511, A75  
 Bitner, M.A., Richte, M.J., Lacy, J.H. et al. 2008, *ApJ* 688, 1326  
 Blake, G.A. and Boogert, A.C.A. 2004, *ApJ* 606, 73  
 Bouwman, J., de Koter, A., Dominik, C. and Waters, L.B.F.M. 2003, *A&A* 401, 577  
 Brittain, S.D., Simon, Th., Najita, J.R., and Rettig, T.W. 2007, *ApJ* 659, 685  
 Brown, J.M., Herczeg, G.J., Pontoppidan, K.M. and E.F. van Dishoeck 2012, *ApJ* 744, 116  
 Brown J. M., Pontoppidan, K. M., van Dishoeck, E.F. et al. 2013, *ApJ*, accepted  
 Bruderer, S., van Dishoeck, E.F., Doty, S.D. and Herczeg, G.J. 2012, *A&A* 541, 91  
 Carmona, A., van den Ancker, M.E., Henning, Th. et al. 2008, *A&A* 477, 839  
 Carmona, A., van der Plas, G., van den Ancker, M.E. et al. 2011, *A&A* 533, A39  
 Dent, W.R.F., Greaves, J.S., Coulson, I.M. 2005, *MNRAS* 359, 663  
 Dominik, C., Dullemond, C.P., Waters, L.B.F.M. et al. 2003, *A&A* 398, 607  
 Dullemond, C.P., Dominik, C. and Natta, A. 2001, *ApJ*, 560, 957  
 France, K., Schindhelm, E., Herczeg, G. J., et al. 2012, *ApJ*, 756, 171  
 Geers, V.C., Augereau, J.-C., Pontoppidan, K.M. et al. 2006, *A&A* 459, 545  
 Geers, V.C., Pontoppidan, K.M., van Dishoeck, E.F. et al. 2007, *A&A* 476, 279  
 Giannini, T., Lorenzetti, D., Tommasi, E. et al. *A&A* 346, 617  
 Goldsmith, P.F., and Langer, W.D. 1999, *ApJ* 517, 209  
 Goto, M., Usuda, T., Dullemond, C.P. et al. 2006, *ApJ* 652, 758  
 Green, J. D., Evans, N. J. II, Jørgensen, J. K. et al. 2013, *ApJ*, accepted (arXiv:1304.7389)  
 Hersant, F., Wakelam, V., Dutrey, A. et al. 2009, *A&A* 493, L49  
 Herczeg, G. J., Walter, F.M., Linsky, J.L. et al. 2005, *AJ* 129, 2777  
 Herczeg, G. J., Linsky, J.L., Jeffrey, L. et al. 2006, *ApJS* 165, 256  
 Honda, M., Inoue, A.K., Okamoto, Y.K. et al. 2010, *ApJ* 718, 199  
 Ingelby, L., Calvet, N., Bergin, E. et al. 2011, *ApJ* 743, 105  
 Isella, A., Natta, A., Wilner, D., Carpenter, J.M. and Testi, L. 2010, *ApJ* 725, 1735  
 Jonkheid, B., Dullemond, C. P., Hogerheijde M. R., & van Dishoeck, E. F. 2007, *A&A*, 463, 203  
 Juhász, A., Bouwman, J. Henning, Th. et al. 2010, *ApJ* 721, 431  
 Karska, A., Herczeg, G.J., van Dishoeck, E.F., et al. 2013, *A&A* 552, 141  
 Kamp, I., and Dullemond, C.P. 2004, *ApJ* 615, 991  
 Kamp, I., Woitke, P., Pinte, C. et al. 2011, *A&A* 532, 85  
 Koerner, D.W., and Sargent, A.I. 1995, *AJ* 109, 2138  
 Lahuis, F., van Dishoeck, E.F., Blake, G.A. et al. 2007, *ApJ* 665, 492  
 Lavalley-Fouquet, C., Cabrit, S. and Dougados, C. 2000, *A&A* 356, L41  
 Maaskant, K. M., Honda, M., Waters, L.B.F.M. et al. 2013, arXiv:1305.3138  
 Martin-Zaïdi, C., Habart, E., Augereau, J.-C. et al. 2009, *ApJ*, 695, 1302  
 Martin-Zaïdi, C., Augereau, J.-C., Ménard, F. et al. 2010, *A&A* 516, A110  
 Meeus, G., Waters, L.B.F.M., Bouwman, J. et al. 2001, *A&A* 365, 476  
 Meeus, G., Montesinos, B., Mendigutía, I. et al. 2012, *A&A* 544, 78  
 Mundt R. 1984, *ApJ* 280, 749  
 Najita, J., Carr, J.S., and Mathieu, R.D. 2003, *ApJ* 589, 931  
 Öberg, K.I., Qi, C., Fogel, J.K.J. et al. 2010, *ApJ* 720, 480  
 Panić, O., Hogerheijde, M.R., Wilner, D., and Qi, C. 2008, *A&A* 491, 219  
 Panić, O. and Hogerheijde 2009, *A&A* 508, 707  
 Panić, O., van Dishoeck, E. F., Hogerheijde, M. R., et al. 2010, *A&A*, 519, A110  
 Pilbratt, G. et al. 2010, *A&A* 518, L1  
 Podio, L., Kamp, I. et al. 2012, *A&A*, 545, 44  
 Poglitsch et al. 2010, *A&A* 518, L2  
 Pontoppidan K.M., Blake, G.A., van Dishoeck, E.F. et al. 2008, *ApJ* 684, 1323  
 Röllig, M., Abel, N. P., Bell, T., et al. 2007, *A&A*, 467, 187  
 Salyk, C., Blake, G.A., Boogert, A.C.A. and Brown, J.M. 2009, *ApJ* 699, 330  
 Salyk, C., Blake, G.A., Boogert, A.C.A., and Brown, J.M. 2011, *ApJ* 743, 112  
 Salyk, C., Herczeg, G.J., Brown, J.M. et al. 2013, *ApJ* 769, 21  
 Sturm, B., Bouwman, J., Henning, T., et al. 2010, *A&A*, 518, L129  
 Thi, W. F., van Dishoeck, E. F., Blake, G. A., et al. 2001, *ApJ*, 561, 1074  
 Thi, W. F., Ménard, F., Meeus, G. et al. 2011, *A&A* 530, L2  
 Thi, W. F., Kamp, I., Woitke, P. et al. 2013, *A&A* 551, 49  
 van de Marel, N., van Dishoeck, E.F., Bruderer, S. et al. 2013, *Sci* 340, 1199  
 van der Plas, G., van den Ancker, M.E., Acke, B. et al. 2009, *A&A* 500, 1137  
 Weingartner, J. C. & Draine, B. T. 2001, *ApJ*, 548, 296

## Appendix A: Detection of CO transitions

In Table A.1, we list the transitions that were detected in our PACS spectra, while in Figs. A.1 to A.8, we show windows around the position of the CO lines for those objects where CO line emission was detected.



**Fig. A.8.** The spectra of RU Lup, centered on the CO lines, indicated in red. In blue, we indicate the position of OH lines.

## Appendix B: Upper limits

In Tables B.1 and B.2, we give the upper limits at a few key transitions ( $J36 \rightarrow 35$ ,  $29 \rightarrow 28$ ,  $23 \rightarrow 22$ ,  $18 \rightarrow 17$ , and  $15 \rightarrow 14$ ) for those sources where not a single CO emission line was detected.

**Table A.1.** CO Transitions detected in the PACS SED scans.

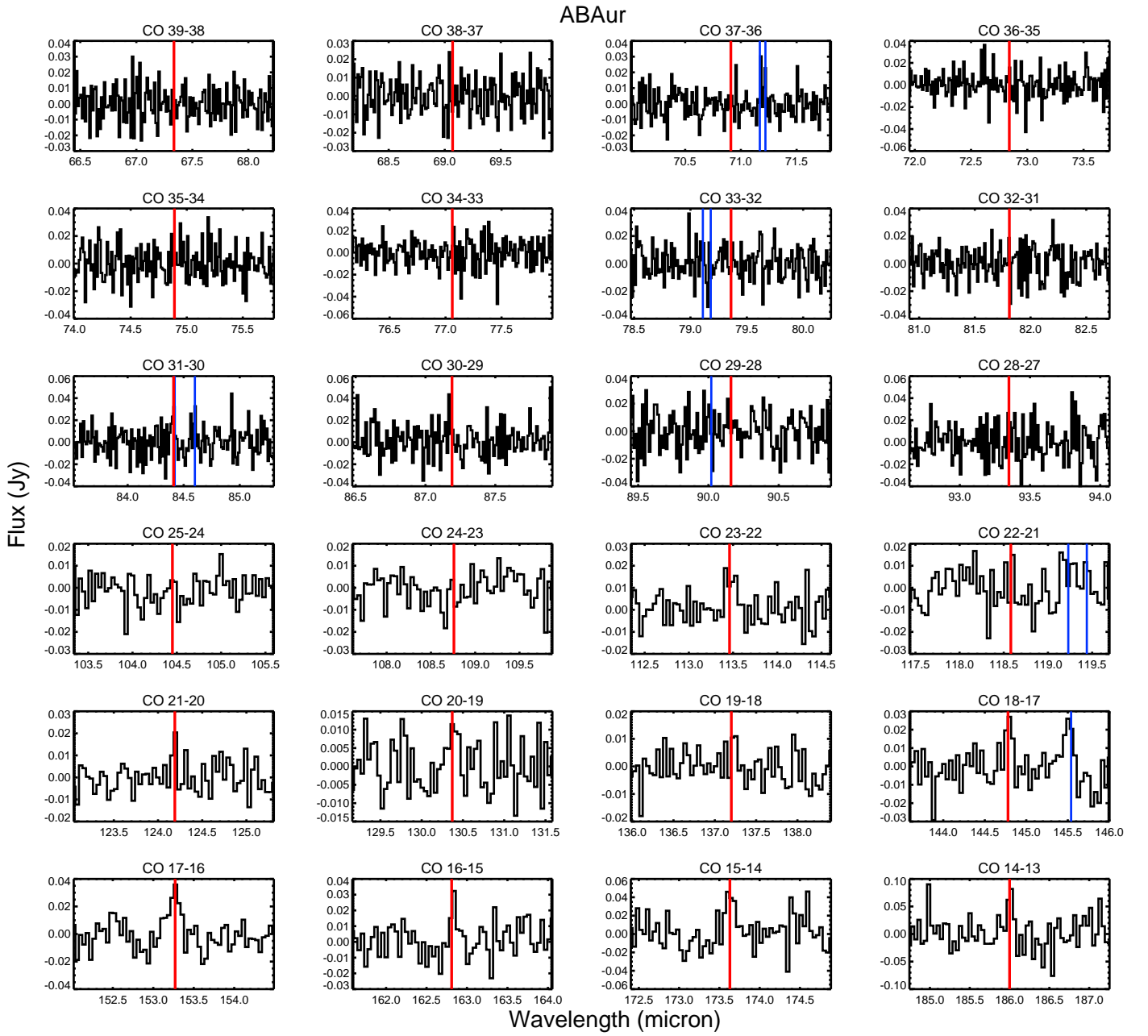
Transition	Wavelength ( $\mu\text{m}$ )	$E_{\text{up}}$ (K)
$J36 \rightarrow 35$	72.84	3669
$J35 \rightarrow 34$	74.89	3471
$J34 \rightarrow 33$	77.11	3279
$J33 \rightarrow 32$	79.36	3093
$J32 \rightarrow 31$	81.81	2911
$J31 \rightarrow 30$	84.41	2735
$J30 \rightarrow 29$	87.19	2565
$J29 \rightarrow 28$	90.16	2400
$J28 \rightarrow 27$	93.35	2240
$J25 \rightarrow 24$	104.45	1794
$J24 \rightarrow 23$	108.76	1657
$J23 \rightarrow 22$	113.46	1524
$J22 \rightarrow 21$	118.58	1397
$J21 \rightarrow 20$	124.19	1276
$J20 \rightarrow 19$	130.37	1160
$J19 \rightarrow 18$	137.20	1050
$J18 \rightarrow 17$	144.78	945
$J17 \rightarrow 16$	153.27	846
$J16 \rightarrow 15$	162.81	752
$J15 \rightarrow 14$	173.63	663
$J14 \rightarrow 13$	186.00	581

**Table B.1.** CO upper limits at selected wavelengths for the sources with full SEDs scans (50-200  $\mu\text{m}$ ) in  $\text{W}/\text{m}^2 \times 10^{-18}$ . The continuum level is given in Jy.

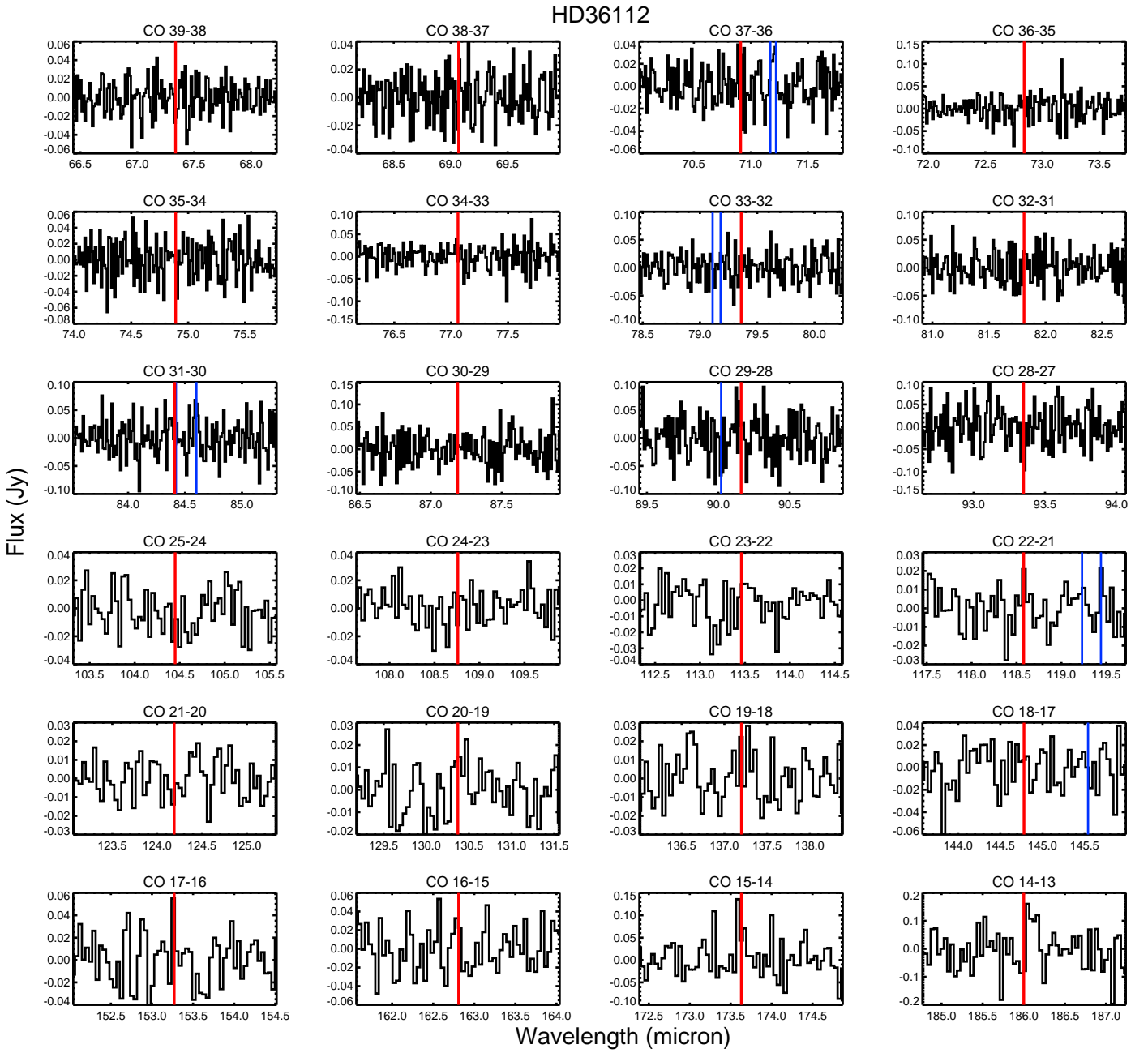
Object	$J36 \rightarrow 35$	Cont. 72.8 $\mu\text{m}$	$J29 \rightarrow 28$	Cont. 90.2 $\mu\text{m}$	$J23 \rightarrow 22$	Cont. 113.5 $\mu\text{m}$	$J18 \rightarrow 17$	Cont. 144.8 $\mu\text{m}$	$J15 \rightarrow 14$	Cont. 173.6 $\mu\text{m}$
HD 35187	< 5.7	4.9	–	–	< 16.7	3.3	< 10.8	2.9	–	–
HD 38120	< 20.2	8.6	< 25.5	7.6	< 11.9	5.3	< 9.6	4.0	< 13.7	3.1
HD 50138	< 33.0	5.7	< 33.6	3.9	< 12.9	20.1	< 12.7	1.22	< 17.1	0.95
HD 100453	< 67.1	35.3	< 20.7	30.3	< 14.5	20.5	< 9.8	15.9	< 19.1	14.0
HD 104237	< 53.9	9.3	< 27.6	8.6	< 13.9	6.4	< 11.7	4.8	< 19.0	4.3
HD 135344	< 24.6	31.2	< 19.1	30.7	< 12.8	24.9	< 6.9	20.5	< 15.5	18.2
HD 139614	< 32.8	18.3	< 21.7	17.1	< 11.2	13.4	< 9.5	12.1	< 17.2	11.7
HD 142527	< 7.6	109.7	< 37.2	95.1	< 29.6	74.4	< 22.1	63.1	< 37.9	56.2
HD 144668	< 36.8	5.6	< 21.5	4.5	< 13.4	2.8	< 8.2	1.9	< 20.1	1.7
HD 163296	< 4.1	19.0	< 23.9	21.7	< 13.6	19.3	< 11.8	19.1	16.6 (5.1)	19.4
HD 169142	< 121.3	27.1	< 53.5	24.1	< 33.0	19.2	< 20.4	17.8	< 20.1	16.1
HD 179218	< 22.8	21.0	< 13.9	16.4	< 10.1	10.7	< 6.5	7.2	< 12.2	5.7
SR 21	< 32.3	33.5	< 26.4	29.9	< 11.0	21.8	< 11.3	16.6	< 18.9	13.9

**Table B.2.** CO Upper limits for the sources with the forsterite scans (60-71  $\mu\text{m}$  + 120-143  $\mu\text{m}$ ) in  $\text{W}/\text{m}^2 \times 10^{-18}$ . With ‘:’ we indicate a detection that is between 2 and 3 sigma. The continuum level is given in Jy.

Object	CO $J38 \rightarrow 37$	Cont. 70.9 $\mu\text{m}$	CO $J21 \rightarrow 20$	Cont. 124 $\mu\text{m}$
HD 98922	< 30.8	6.1	7.5: (3.2)	1.1
HD 141569	< 22.6	5.4	< 13.1	2.1
HD 142666	< 30.1	6.7	< 11.9	5.1
HD 144432	< 16.7	5.8	< 8.0	2.9
HD 150193	< 24.7	7.2	< 7.1	3.2
HT Lup	< 50.2	6.2	< 23.9	11.0
RU Lup	< 22.0	5.9	< 9.0	4.2
RY Lup	< 20.3	6.3	< 8.6	3.9
RNO90	< 25.6	3.8	< 11.9	2.1

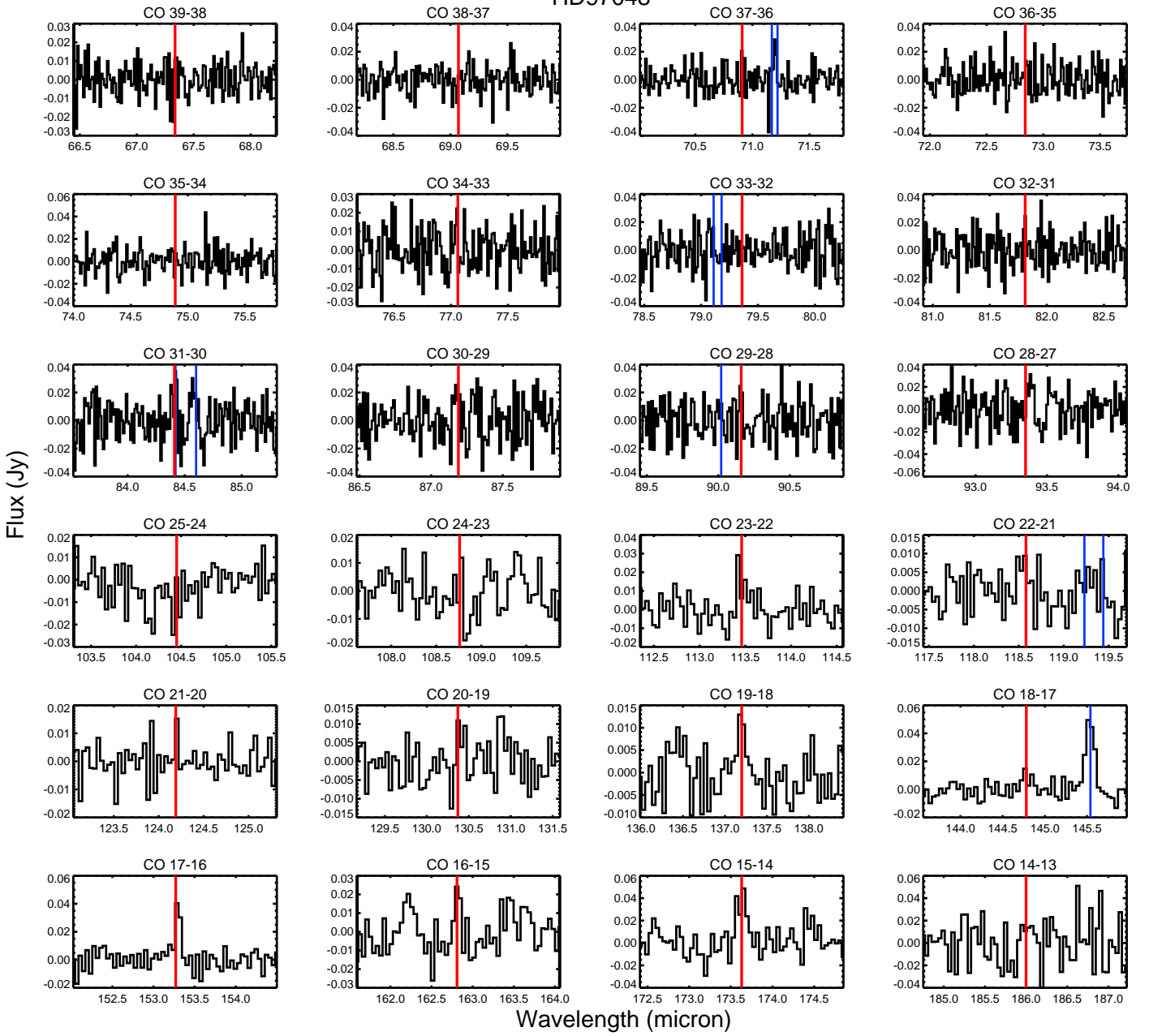


**Fig. A.1.** The spectra of AB Aur, centered on the CO lines, indicated in red. The OH line at  $84.42 \mu\text{m}$  blends with the CO  $J = 31 \rightarrow 30$  line. In blue, we indicate the positions of other lines ( $\text{CH}^+$  at  $90 \mu\text{m}$  and  $[\text{O I}]$  at  $145 \mu\text{m}$ ; rest are OH doublets).



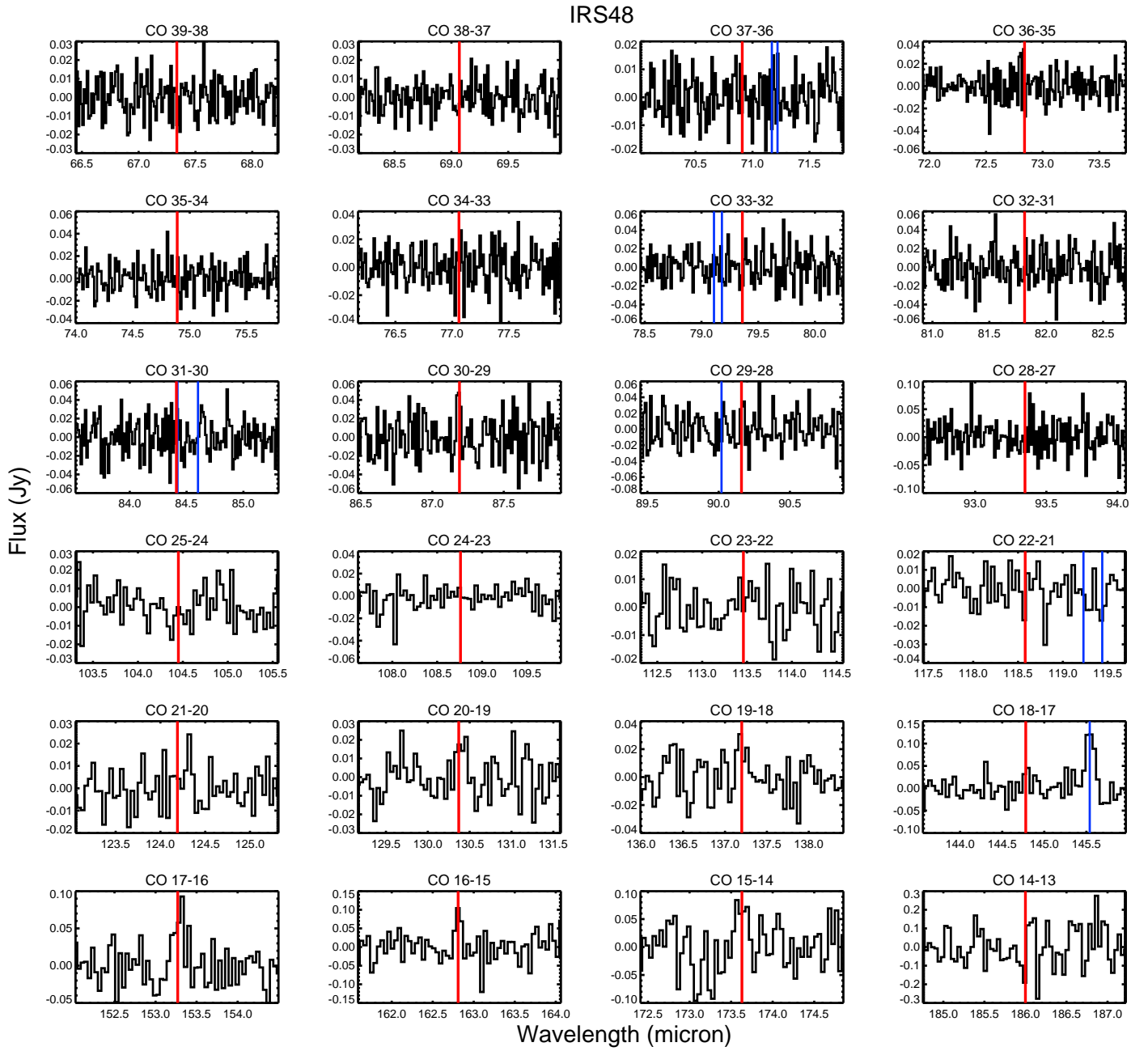
**Fig. A.2.** The spectra of HD 36112, centered on the CO lines, indicated in red. The OH line at  $84.42 \mu\text{m}$  blends with the CO  $J = 31 \rightarrow 30$  line. In blue, we indicate the positions of other lines ( $\text{CH}^+$  at  $90 \mu\text{m}$  and  $[\text{O I}]$  at  $145 \mu\text{m}$ ; rest are OH doublets).

## HD97048



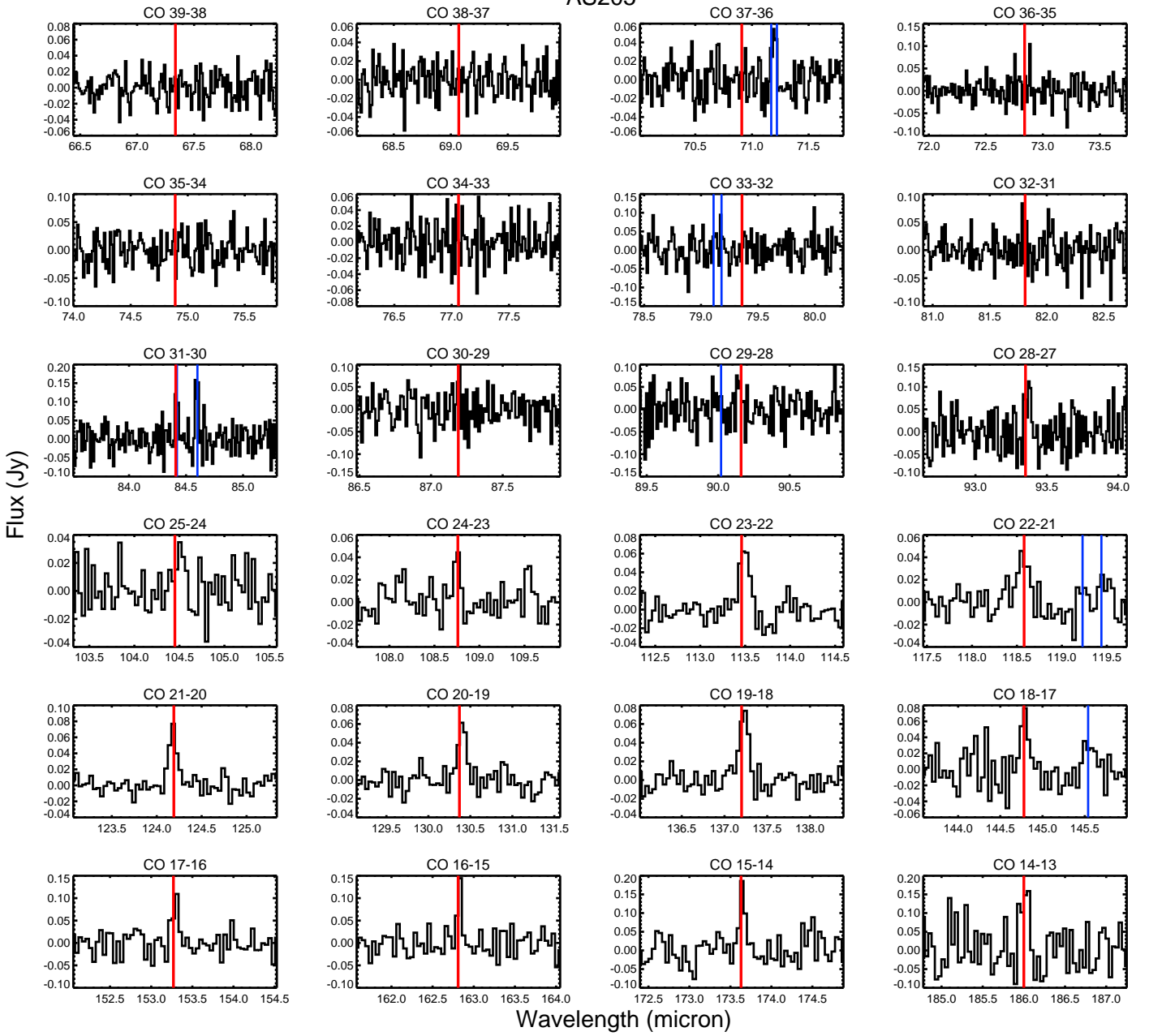
**Fig. A.3.** The spectra of HD 97048, centered on the CO lines, indicated in red. The OH line at 84.42  $\mu\text{m}$  blends with the CO  $J = 31 \rightarrow 30$  line. In blue, we indicate the positions of other lines (CH<sup>+</sup> at 90  $\mu\text{m}$  and [O I] at 145  $\mu\text{m}$ ; rest are OH doublets).



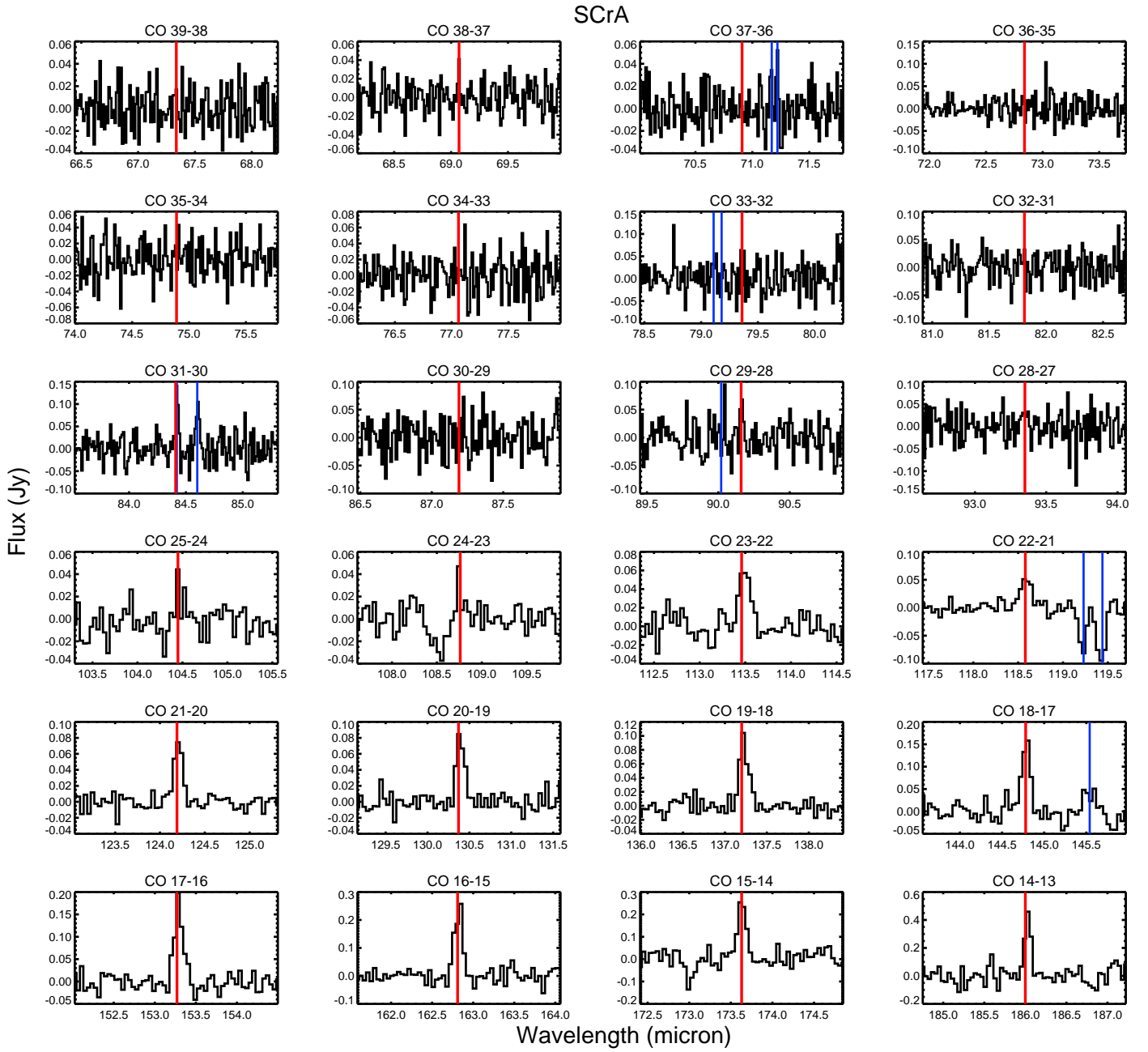


**Fig. A.4.** The spectra of IRS 48, centered on the CO lines, indicated in red. The OH line at  $84.42 \mu\text{m}$  blends with the CO  $J = 31 \rightarrow 30$  line. In blue, we indicate the positions of other lines ( $\text{CH}^+$  at  $90 \mu\text{m}$  and  $[\text{O I}]$  at  $145 \mu\text{m}$ ; rest are OH doublets).

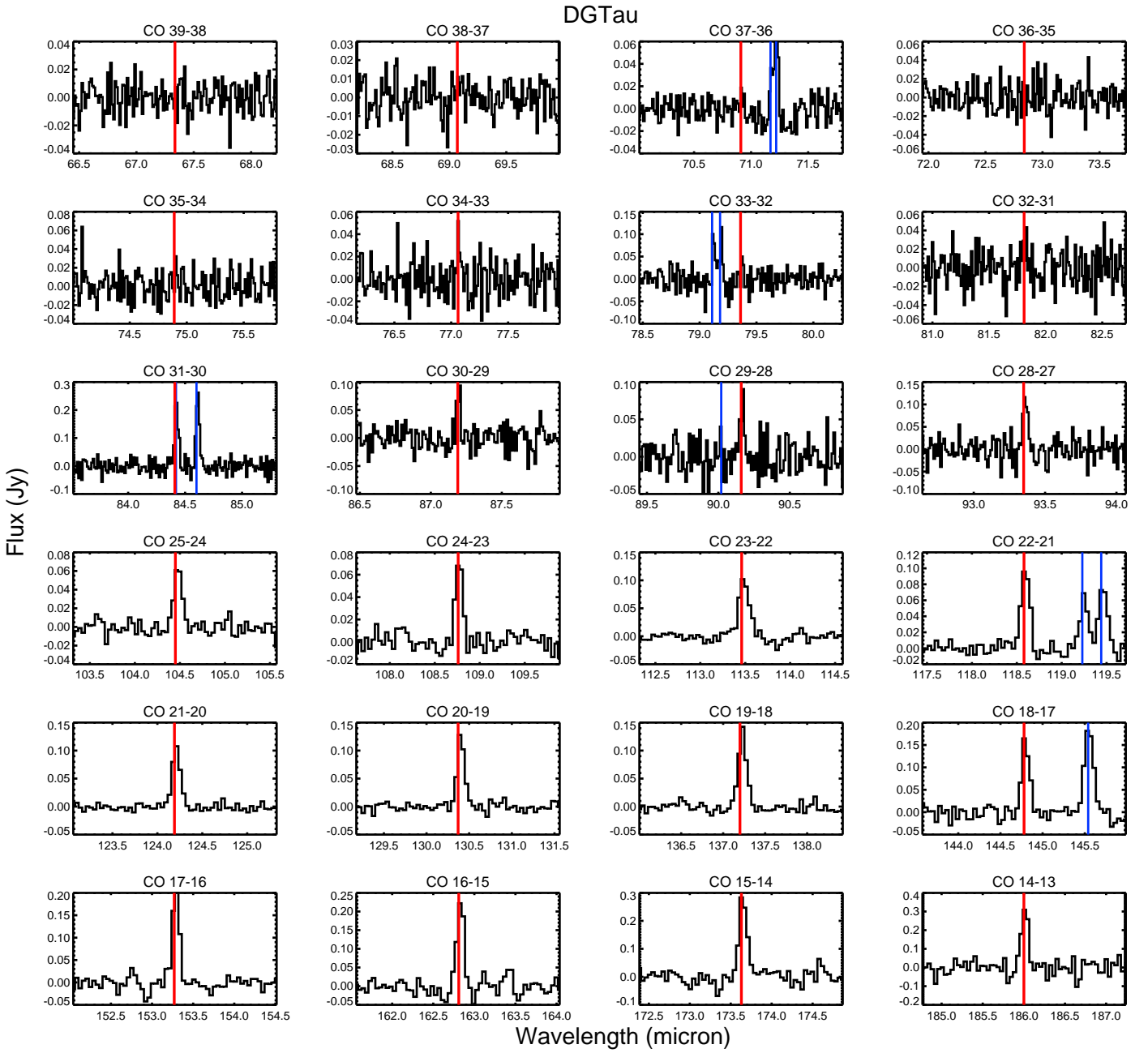
## AS205



**Fig. A.5.** The spectra of AS 205, centered on the CO lines, indicated in red. The OH line at 84.42 μm blends with the CO  $J = 31 \rightarrow 30$  line. In blue, we indicate the positions of other lines (CH<sup>+</sup> at 90 μm and [O I] at 145 μm; rest are OH doublets).



**Fig. A.6.** The spectra of S CrA, centered on the CO lines, indicated in red. The OH line at  $84.42 \mu\text{m}$  blends with the CO  $J = 31 \rightarrow 30$  line. In blue, we indicate the positions of other lines ( $\text{CH}^+$  at  $90 \mu\text{m}$  and  $[\text{O I}]$  at  $145 \mu\text{m}$ ; rest are OH doublets).



**Fig. A.7.** The spectra of DG Tau, centered on the CO lines, indicated in red. The OH line at  $84.42 \mu\text{m}$  blends with the CO  $J = 31 \rightarrow 30$  line. In blue, we indicate the positions of other lines ( $\text{CH}^+$  at  $90 \mu\text{m}$  and  $[\text{O I}]$  at  $145 \mu\text{m}$ ; rest are OH doublets).